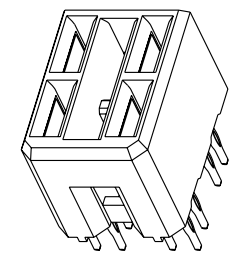
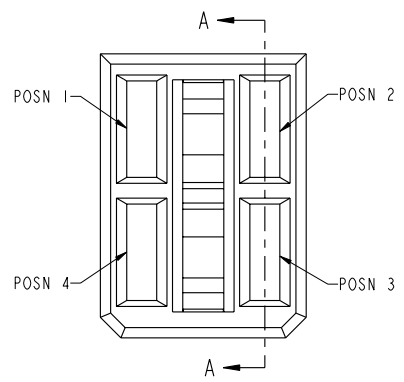
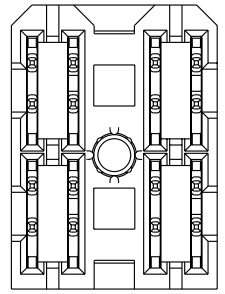
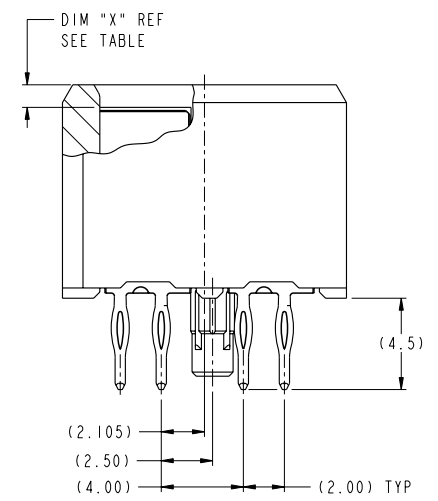
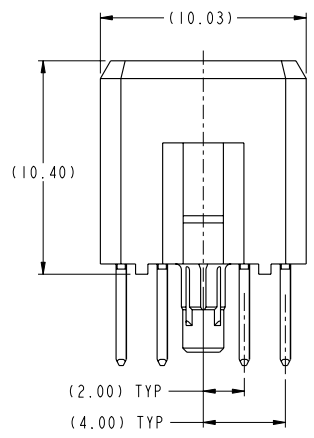
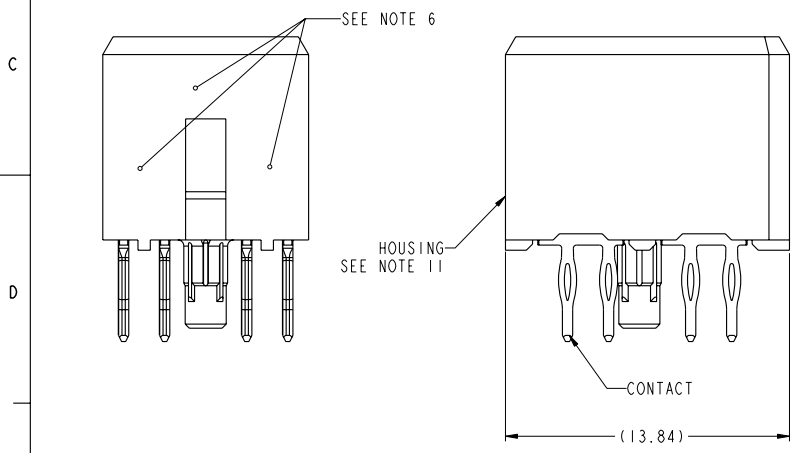


| I | PRODUCT NUMBER<br>("LF" DENOTES LEAD-FREE) | CONTACT<br>PLATING<br>NOTE | MATING LENGTH, DIM "X" |        |        |        | ROHS<br>COMPATIBILITY |
|---|--------------------------------------------|----------------------------|------------------------|--------|--------|--------|-----------------------|
|   |                                            |                            | POSN 1                 | POSN 2 | POSN 3 | POSN 4 |                       |
| A | 10028916-4444P00                           | 2                          |                        |        |        |        | N/A                   |
| A | 10028916-4444P00LF                         | 3                          | 1.10                   | 1.10   | 1.10   | 1.10   | SEE NOTE 9            |
| A | 10028916-5555P00                           | 2                          |                        |        |        |        | N/A                   |
| A | 10028916-5555P00LF                         | 3                          | 2.60                   | 2.60   | 2.60   | 2.60   | SEE NOTE 9            |
| A | 10028916-4555P00                           | 2                          |                        |        |        |        | N/A                   |
| A | 10028916-4555P00LF                         | 3                          | 1.10                   | 2.60   | 2.60   | 2.60   | SEE NOTE 9            |
| A | 10028916-5455P00                           | 2                          |                        |        |        |        | N/A                   |
| A | 10028916-5455P00LF                         | 3                          | 2.60                   | 1.10   | 2.60   | 2.60   | SEE NOTE 9            |
| A | 10028916-5545P00                           | 2                          |                        |        |        |        | N/A                   |
| A | 10028916-5545P00LF                         | 3                          | 2.60                   | 2.60   | 1.10   | 2.60   | SEE NOTE 9            |
| B | 10028916-5554P00                           | 2                          |                        |        |        |        | N/A                   |
| B | 10028916-5554P00LF                         | 3                          | 2.60                   | 2.60   | 2.60   | 1.10   | SEE NOTE 9            |
| B | 10028916-4554P00                           | 2                          |                        |        |        |        | N/A                   |
| B | 10028916-4554P00LF                         | 3                          | 1.10                   | 2.60   | 2.60   | 1.10   | SEE NOTE 9            |
| B | 10028916-4455P00                           | 2                          |                        |        |        |        | N/A                   |
| B | 10028916-4455P00LF                         | 3                          | 1.10                   | 1.10   | 2.60   | 2.60   | SEE NOTE 9            |
| B | 10028916-5544P00                           | 2                          |                        |        |        |        | N/A                   |
| B | 10028916-5544P00LF                         | 3                          | 2.60                   | 2.60   | 1.10   | 1.10   | SEE NOTE 9            |



SCALE 4:1



Copyright FCI.

F

| rev | ecr no   | dr  | date       |
|-----|----------|-----|------------|
| H   | S10-0086 | AY  | 2010-05-11 |
| -   | -        | -   | -          |
| C   | V05-0480 | WJS | 2005-05-16 |
| D   | S05-0301 | WJS | 2005-10-24 |
| E   | S05-0325 | CH  | 2005-11-10 |
| F   | S06-0412 | LS  | 2006-12-21 |
| G   | S09-0319 | YK  | 2009-10-14 |

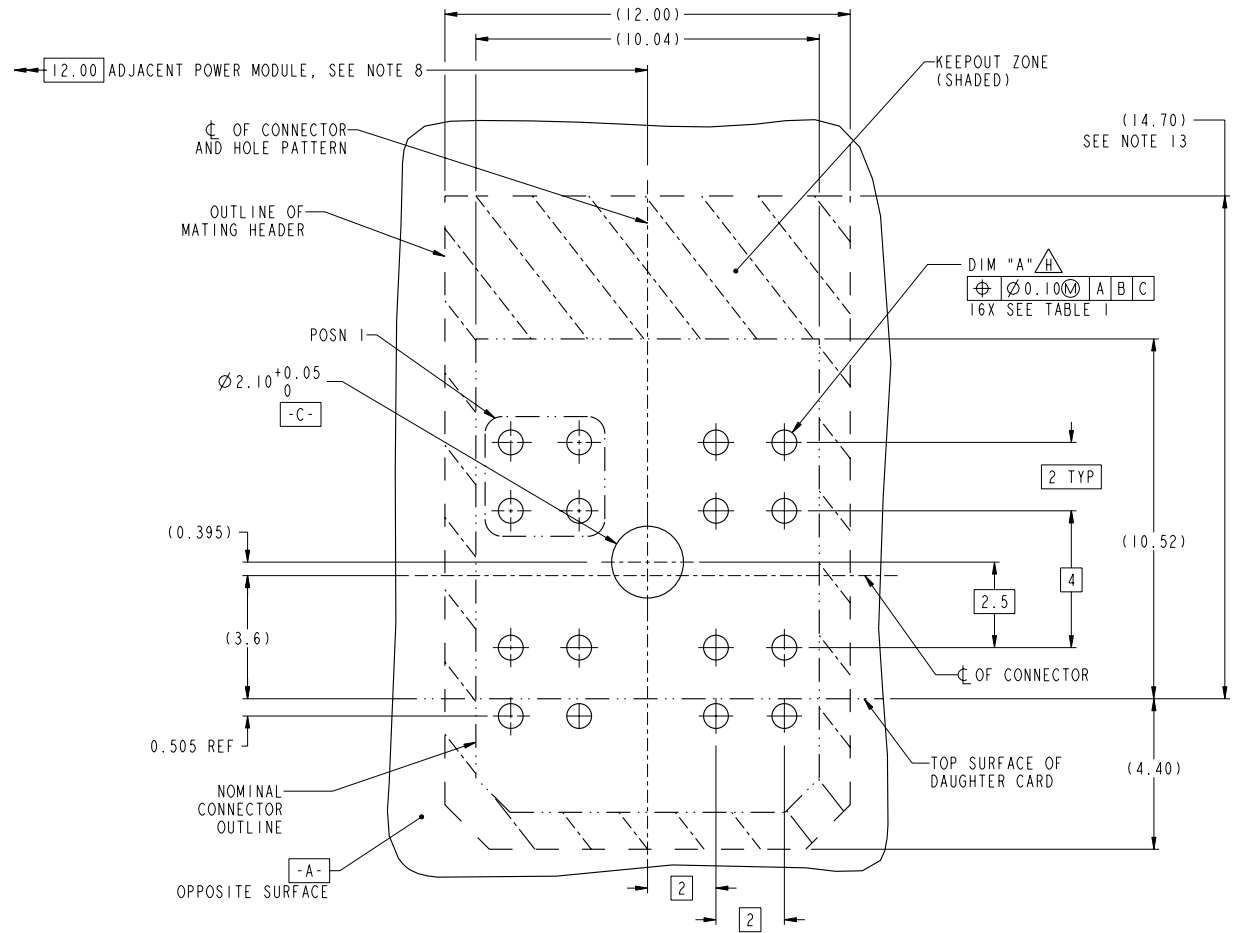
|                                |  |                                       |                             |                    |
|--------------------------------|--|---------------------------------------|-----------------------------|--------------------|
| www.fciconnect.com             |  | surface 3.2<br>ASME Y14.5             | tolerance std<br>ASME Y14.5 | projection<br>MM   |
| Dr W. J. SWAIN 2003-05-22      |  | TOLERANCES UNLESS OTHERWISE SPECIFIED |                             | size A2 Scale 1:1  |
| Eng ANDREW YONG 2010-05-11     |  | ANGULAR                               | LINEAR                      | ECN S10-0086       |
| Chr C. H. TAN 2010-05-11       |  | 0.XX ±.3                              | 0.xxx ±.05                  | Spec ref GS-12-220 |
| Appr JOEY NG 2010-05-11        |  | Product family 2mm High Power         |                             | Rev. H             |
| FCI RECEPTACLE ASSEMBLY, POWER |  | 10028916                              |                             | sheet 1 of 2       |
| catalog no                     |  | CUSTOMER                              |                             |                    |

**CONFIDENTIAL**

| TOP LAYER DESCRIPTION | TABLE I<br>PLATED THROUGH-HOLE REQUIREMENTS |                  |                    |                  |                    |               |                  |                                               |
|-----------------------|---------------------------------------------|------------------|--------------------|------------------|--------------------|---------------|------------------|-----------------------------------------------|
|                       | DRILLED HOLE DIAMETER                       | COPPER THICKNESS | TIN-LEAD THICKNESS | NICKEL THICKNESS | GOLD THICKNESS     | TIN THICKNESS | SILVER THICKNESS | FINISHED HOLE DIAMETER (DIM "A") <sup>H</sup> |
| TIN-LEAD              | 0.81-0.86 (0.85 DRILL)                      | 0.025 - 0.050    | 0.005 - 0.015      | --               | --                 | --            | --               | 0.65 - 0.80                                   |
| IMMERSION TIN         | 0.81-0.86 (0.85 DRILL)                      | 0.025 - 0.050    | --                 | --               | --                 | 0.9 - 1.5um   | --               | 0.70 - 0.80                                   |
| IMMERSION SILVER      | 0.81-0.86 (0.85 DRILL)                      | 0.025 - 0.050    | --                 | --               | --                 | --            | 0.15 - 0.65um    | 0.70 - 0.80                                   |
| COPPER (SEE NOTE 12)  | 0.81-0.86 (0.85 DRILL)                      | 0.025 - 0.050    | --                 | --               | --                 | --            | --               | 0.70 - 0.80                                   |
| GOLD                  | 0.81-0.86 (0.85 DRILL)                      | 0.025 - 0.050    | --                 | 0.003 - 0.007    | FLASH UP TO 0.0002 | --            | --               | 0.69 - 0.80                                   |

NOTES:

1. CONNECTOR MATERIALS:  
HOUSING: HIGH TEMPERATURE THERMOPLASTIC, BLACK  
UL 94V-0 COMPLIANT  
CONTACT: HIGH PERFORMANCE COPPER ALLOY
2. CONTACT PLATING:  
PRESS-FIT TAIL: 0.5um TIN-LEAD OVER NICKEL.  
SEPARABLE INTERFACE: 0.76um MIN GOLD OVER NICKEL.
3. CONTACT PLATING (LEAD-FREE):  
PRESS-FIT TAIL: 0.5um MIN MATTE TIN OVER NICKEL.  
SEPARABLE INTERFACE: 0.76um MIN GOLD OVER NICKEL.
4. PRODUCT SPECIFICATION: GS-12-220
5. APPLICATION SPECIFICATION: GS-20-023
6. PRODUCT MARKING (PRODUCT NUMBER & LOT CODE) ON HOUSING IN AREA SHOWN, EITHER SIDE.
7. MINIMUM NOMINAL BOARD THICKNESS: 2.4mm
8. REFER TO CUSTOMER DRAWING SKI0035911 FOR INFORMATION REGARDING PCB LAYOUT OF POWER AND GUIDE MODULES RELATIVE TO AIRMAX SIGNAL MODULES.
9. PRODUCT MEETS EUROPEAN UNION DIRECTIVES AND OTHER COUNTRY REGULATIONS AS DESCRIBED IN FCI SPECIFICATION GS-22-008.
10. PACKAGING MEETS FCI SPECIFICATION GS-14-920
11. HOUSING COMPONENT WILL WITHSTAND EXPOSURE TO 260° PEAK TEMPERATURE FOR 60 SECONDS IN A CONVECTION, INFRA-RED OR VAPOR-PHASE REFLOW OVEN.
12. COPPER PLATING THICKNESS AT CENTER OF VIA HOLE CAN BE NO MORE THAN 0.003 LESS THAN OTHER AREAS.
13. KEEPOUT AREA APPLICABLE FOR HIGH PROFILE POWER HEADER WITH 14.70MM HEIGHT ABOVE TOP SURFACE OF DAUGHTER CARD. IT MAY BE 11.5MM IF A LOWER PROFILE HEADER IS USED.
14. A <sup>H</sup> SYMBOL WILL BE NEXT TO ANY DIMENSION, VIEW, OR NOTE WHICH HAS BEEN MODIFIED WITH THE CURRENT DRAWING REVISION



RECOMMENDED PCB LAYOUT,  
COMPONENT SIDE  
SEE NOTE 7  
SCALE 10:1

|            |                      |        |          |       |        |
|------------|----------------------|--------|----------|-------|--------|
| <b>FCI</b> | RECEPTACLE ASSEMBLY, | no     | 10028916 | Rev.  | H      |
|            | POWER                | cat no | CUSTOMER | sheet | 2 of 2 |

Copyright FCI.