

PRODUCT NUMBER  
77709-YXXLF

RoHS COMPLIANT & COMPATIBLE, SEE NOTE 8

PLATING:

PIN STYLE SEE TABLE SHEET 2

1 = 0.76µm FULL GOLD/GXT, OVER 1.27µm Ni MIN

3 = 3.81µm FULL TIN/LEAD OVER 1.27µm Ni MIN.  
WHEN "LF" IS REQUIRED, 2µm MATTE TIN OVER  
1.27µm MIN NICKEL IS PROVIDED INSTEAD OF TIN-LEAD

7 = 0.13µm FULL GOLD, OVER 1.27µm Ni MIN

8 = 0.38µm FULL GOLD/GXT, OVER 1.27µm Ni MIN

NOTES:

1. HOUSING MAT'L : HIGH TEMPERATURE THERMOPLASTIC  
FLAME RETARDANT PER UL94-V0, COLOR BLACK.

2. PIN MATERIAL : PHOSPHOR BRONZE.

3. STANDARD PACKAGING IN POLYBAG

4. RoHS COMPATIBLE PRODUCT SPECIFICATIONS

a - SUFFIX "LF" IS ADDED JUST FOR EASY

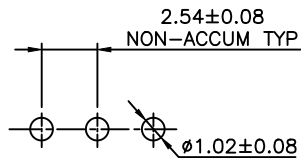
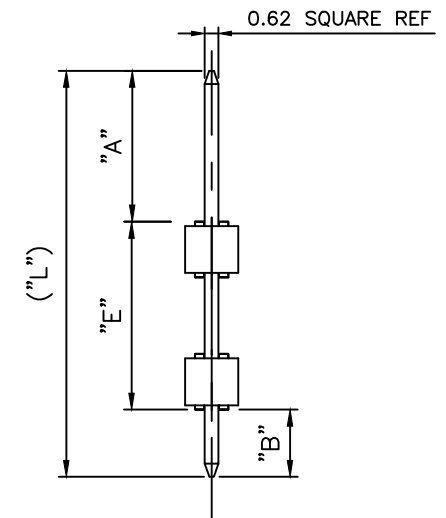
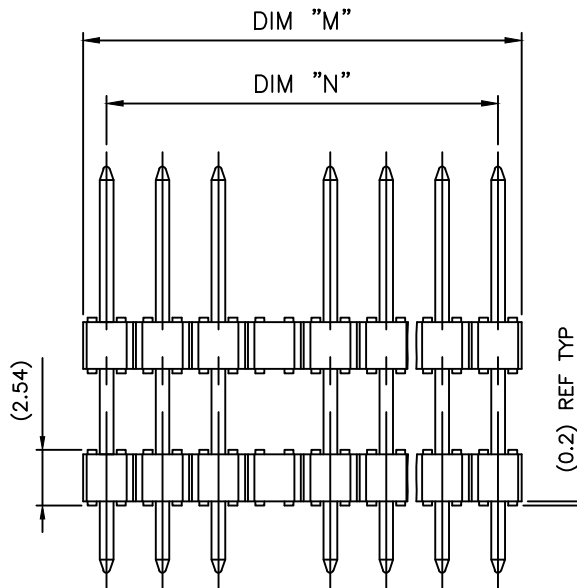
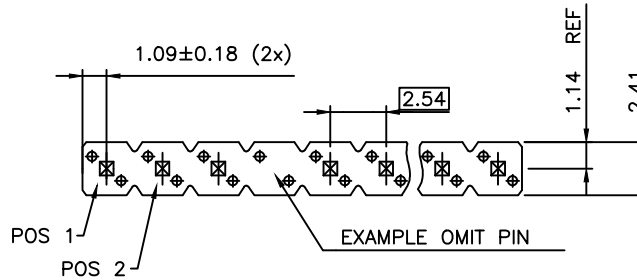
b - MANUFACTURING PROCESS COMPATIBILITY

- THE HOUSING WILL WITHSTAND EXPOSURE TO  
260°C ±5°C SOLDER BATH TEMPERATURE FOR  
5 SECONDS IN A WAVE SOLDER APPLICATION  
WITH A 1.6mm MIN THICK CIRCUIT BOARD.

c - LABELING:

- MEETS PACKAGING SPECS AS PER GS-14-920

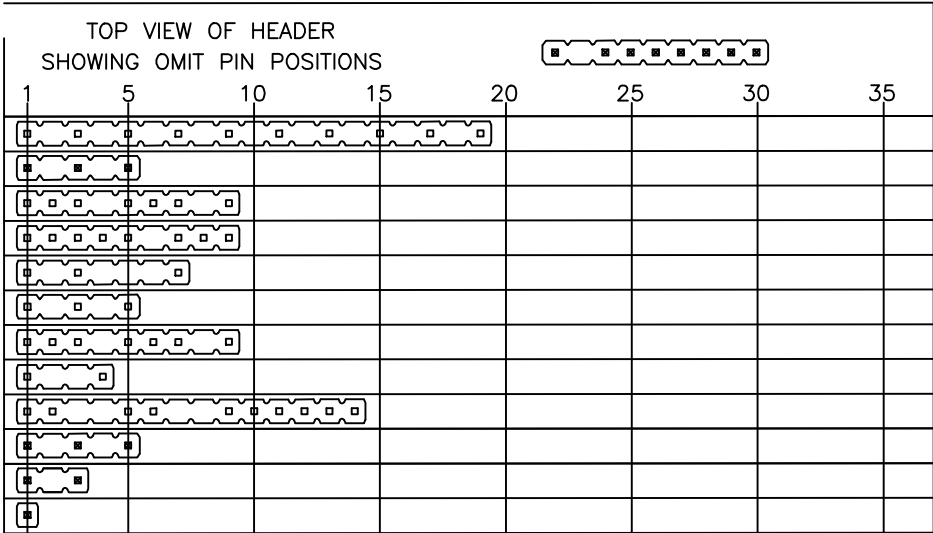
d - LEGAL STATEMENT: SEE GS-47-0004



RECOMMENDED HOLE PATTERN

mat'l. code		surface		tolerance		projection		product family	
		ISO 1302		ISO 406 ISO 1101		mm		BSTIK	
ltr ecn no dr date		tolerances unless otherwise specified		angles		linear		title	
W F-22318 AMA 15.10.27								HEADER SR,STR	
X F-23461 LMU 16.03.07								DOUBLE BODY POL	
Y F-24446 AMA 16.07.05								scale 1:1	
		dr O MATHEVON 96.04.01						dwg no	
T B-18505 LMU 14.08.08 engr COMPAGNON.J 96.04.01								sheet 1 of 2 size	
U B-19562 BVE 14.11.27 chr JCO 96.04.01								77709 A3	
V B-19782 AMA 14.12.18 appd JMC 96.04.01								type CUSTOMER Drawing	
sheet revision Y W									
index sheet 1 2									

PIN STYLE	NB OF POS	PRODUCT DEFINITION					
		"A" ±0.2	"E" ±0.25	"B" ±0.25	("L") REF	("M") REF	("N") REF
21	1x 19	3.0	20.3	2.75	26.04	48.26	45.72
22	1x 05	4.95	6.00	4.95	15.90	12.70	10.16
23	1x 09	4.95	6.00	4.95	15.90	22.86	20.32
24	1x 09	3.10	11.45	3.10	17.65	22.86	20.32
25	1x 07	3.10	11.45	3.10	17.65	17.78	15.24
26	1x 05	8.60	6.00	8.60	23.20	12.70	10.16
27	1x 09	8.60	6.00	8.60	23.20	22.86	20.32
28	1x 04	15.20	12.00	3.60	30.80	10.16	7.62
29	1x 14	15.20	12.00	3.60	30.80	35.56	33.02
30	1x 05	3.00	13.00	3.00	19.00	12.70	10.16
31	1x 03	3.05	6.50	3.05	12.60	7.62	5.08
32	1x 01	3.05	6.50	3.05	12.60	7.62	5.08



Copyright FCI

mat'l. code		surface ISO 1302 <input checked="" type="checkbox"/> ISO 406 ISO 1101		tolerance ISO 406 ISO 1101		projection 		product family BSTIK			
ltr	ecn no	dr	date	tolerances unless otherwise specified		mm		title HEADER SR,STR DOUBLE BODY POL			
P	F09-0222	JCO	09.11.23	angles	Linear	mm		scale 1:1			
R	F12-0043	LMU	12.05.29					dwg no 77709			
S	B-16507	LMU	13.12.12					sheet 2 of 2 size A3			
T	B-18505	LMU	14.08.08	dr	O MATHEVON	96.04.01			type CUSTOMER Drawing		
U	F-22318	AMA	15.10.27	enrg	COMPAGNON.J	96.04.01					
V	F-23461	LMU	16.03.07	chr	JCO	96.04.01					
W	F-24446	AMA	16.07.05	appd	JMC	96.04.01					
sheet	revision										
index	sheet										