

DETAILS

Product Number	C14119_STRADA-SQ-FS2
Family	Strada
Type	Lens
Color	clear
Diameter	25x25 mm
Height	8 mm
Style	square
Optic Material	PMMA
Holder Material	
Fastening	pin, screw, glue
Status	production ready
ROHS Compliant	Yes
Date Updated	8/05/2014



OPTICAL PROPERTIES

LED	Viewing Angle	Light Beam	Efficiency	cd/lm	Connector
PSL440	Asymmetric deg	Streetligh...	91 %	0.660	-
PSL445	Asymmetric deg	Streetligh...	94 %	0.450	-
MK-R	Asymmetric deg	Streetligh...	84 %	0.400	-
XHP70	Asymmetric deg	Streetligh...	80 %	0.400	Undefined Manufacturer: Protective Plate, Glass
LUXEON M/MX	asymmetric deg	Streetligh...	86 %	0.400	-
Duris P10	sim: Asymmetri	Streetligh...	sim: 89 %	0.540	-

D

C

B

A

4

4

Tape

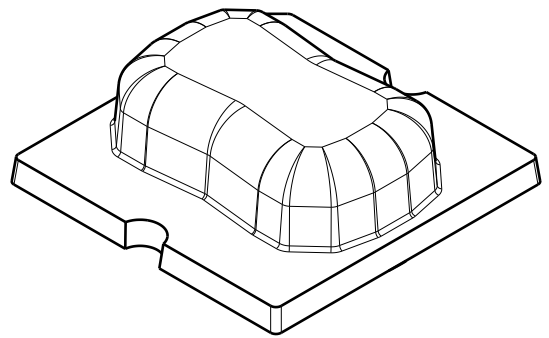
∅2

25.4
c/c

21.52

c/c

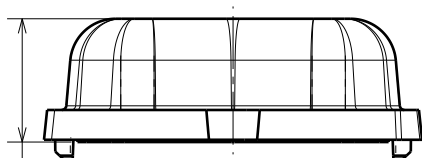
Bottom view



Isometric view

3

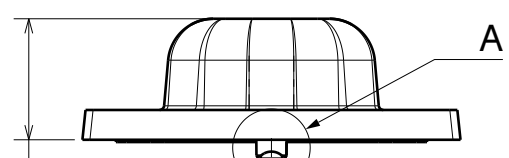
3



8.15

Front view

with tape



8

Left view

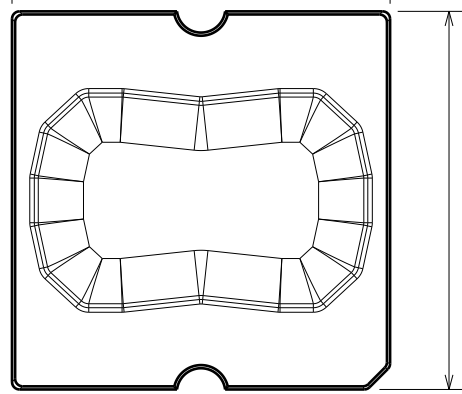
w/o tape

A

2

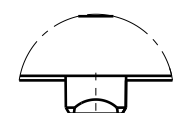
2

25



25

Top view



Detail A

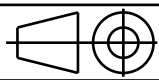
1.25

Tolerances if not otherwise shown
According to DIN ISO 2768-1
Linear measures:
Up to 30mm class M, otherwise class C.
According to DIN ISO 2768-2
Form and position: class L



Ledil Oy
Salorankatu 10
FIN 24240 SALO
Finland

THIRD ANGLE PROJECTION:



DRAWING TITLE
Datasheet STRADA-SQ-FS2

This drawing is the property of LEDiL Oy. It may not be reproduced, copied or communicated without a written agreement with LEDiL Oy.

SIZE PART NUMBER
A4 -

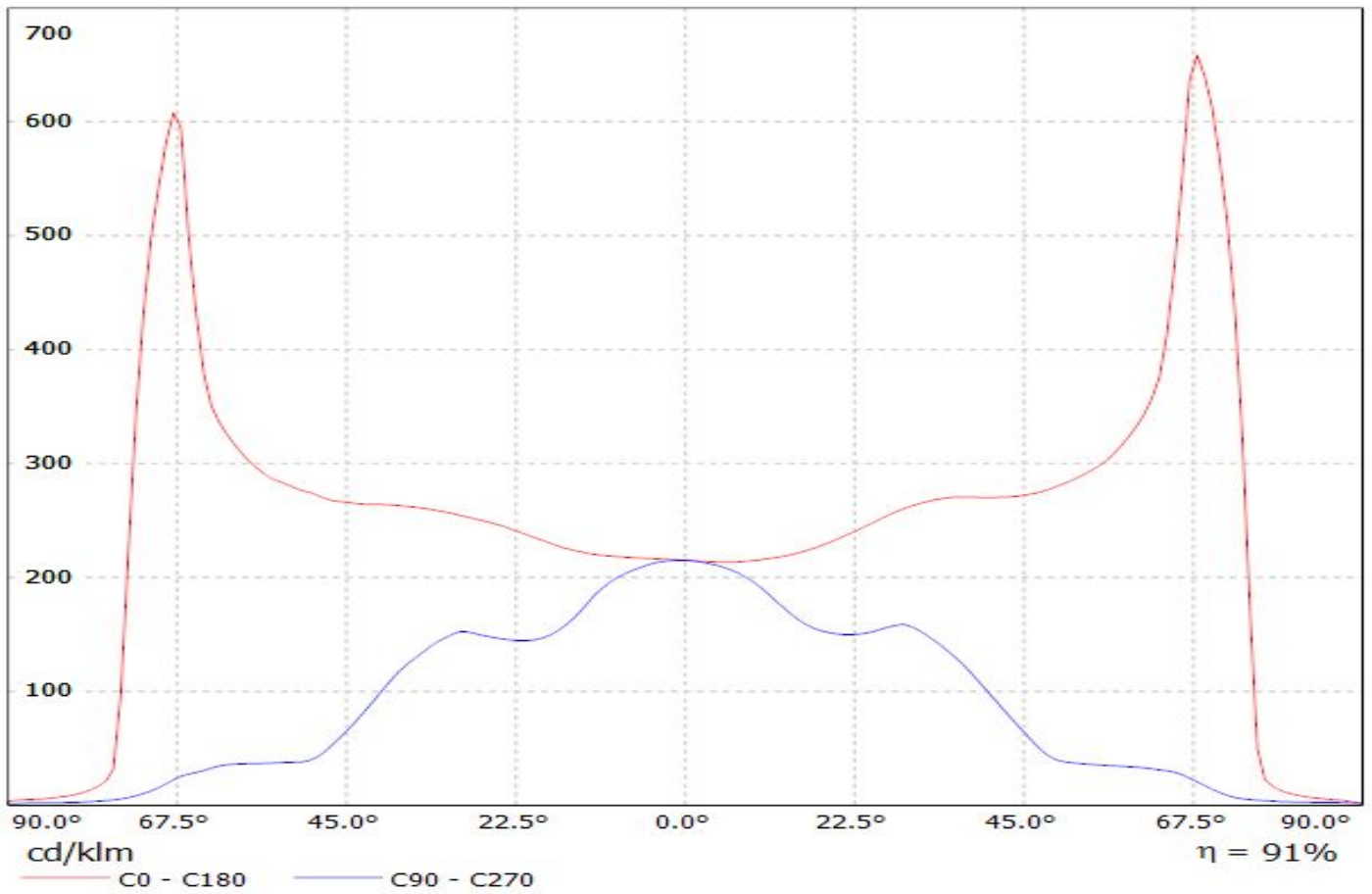
SCALE 2:1 WEIGHT - SHEET 1/1

D

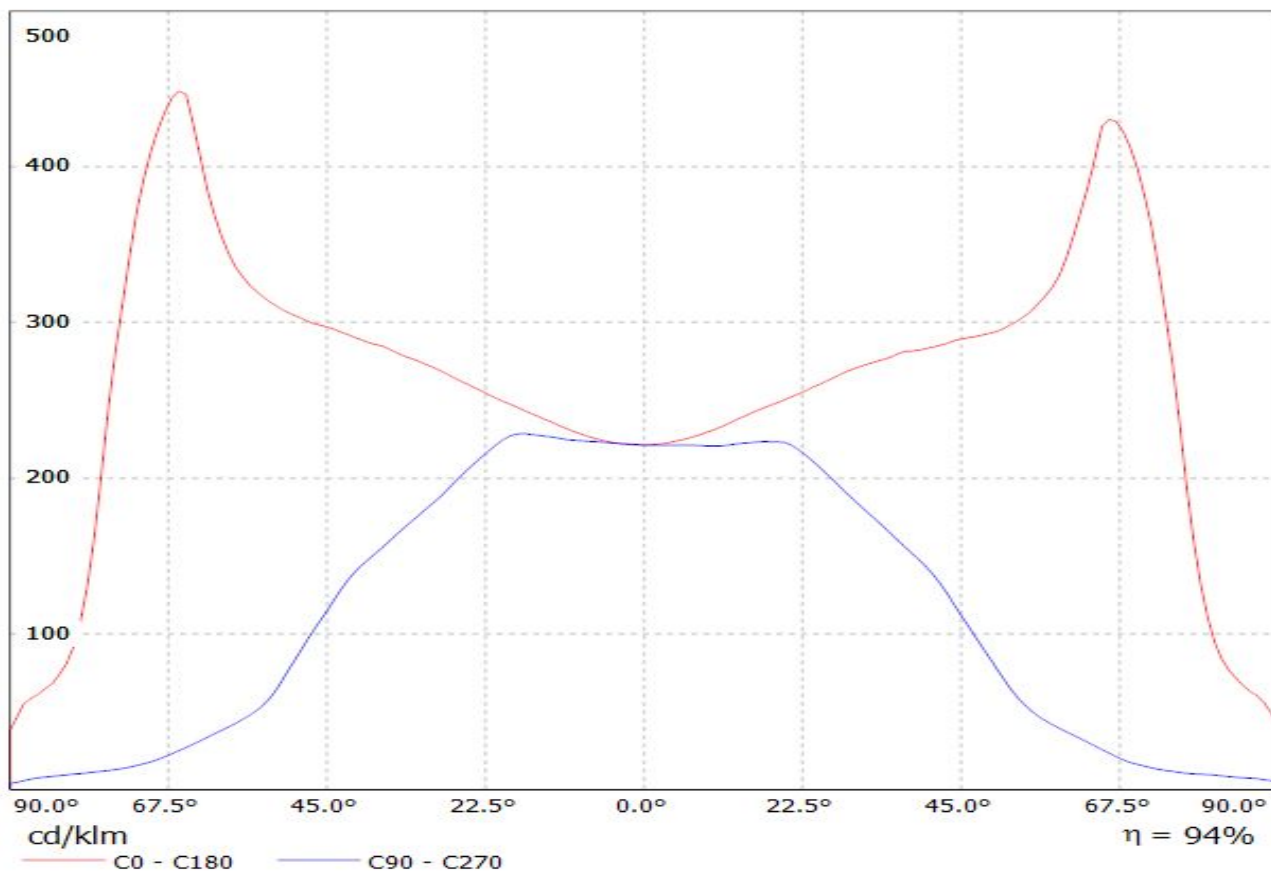
A

1

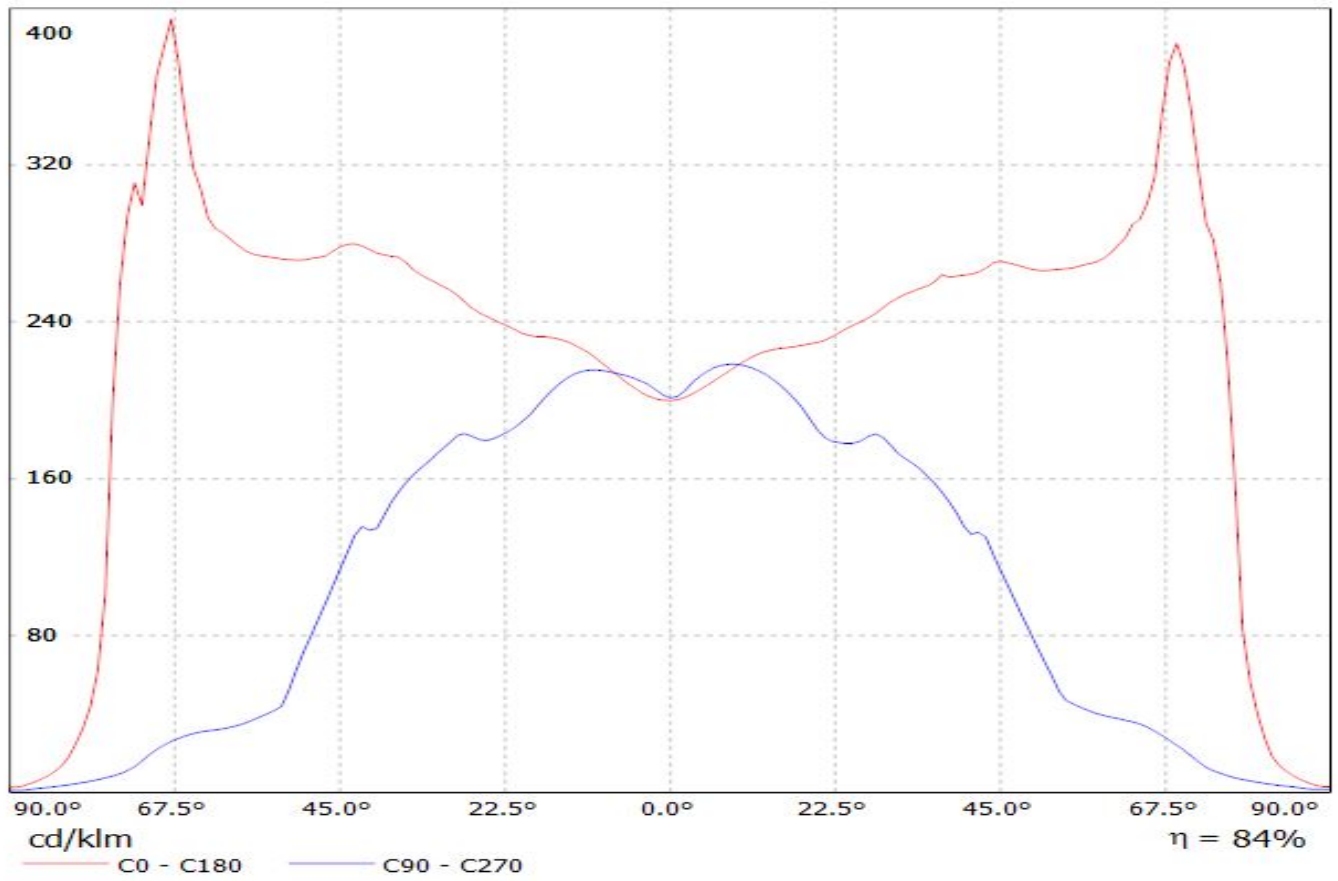
Luminaire: LEDiL Oy CA14120_STRADA-SQ-FS2_(PSL440)
Lamps: 1 x Citizen_PSL440_254.954lm@250mA_P=2.86296W_I=0.250A



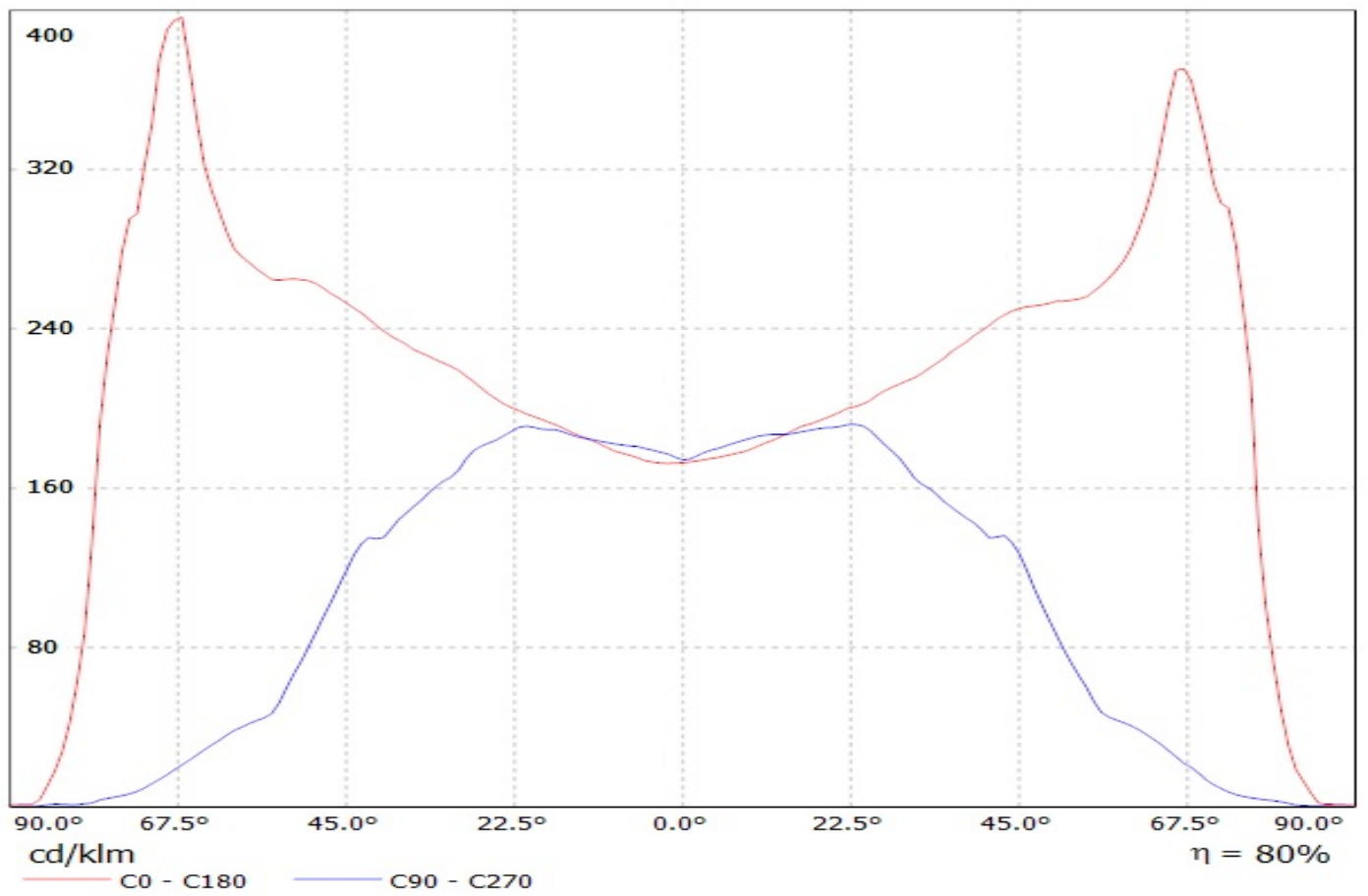
Luminaire: LEDiL Oy C14119_STRADA-SQ-FS2_(PSL445)
Lamps: 1 x Citizen_PSL445_425.848lm@250mA_P=2.8155W_I=0.250A_CCT=2700K



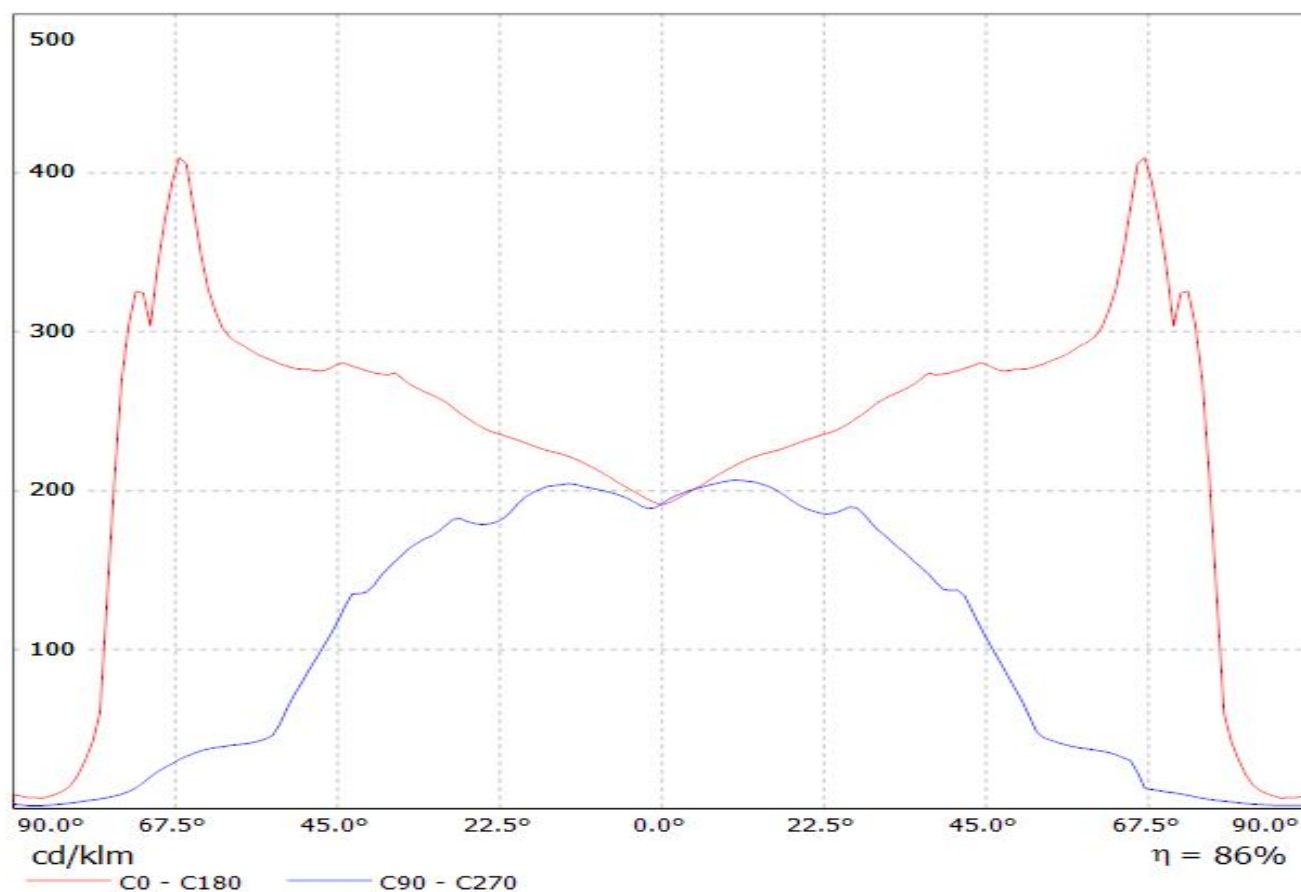
Luminaire: LEDiL Oy C14119_STRADA-SQ-FS2_(MK-R)+glass Eff.83.8%
Lamps: 1 x Cree_MK-R_354.207lm@250mA_CCT=3276K_P=2.84547W_I=249.8mA



Luminaire: LEDiL Oy C14119_STRADA-SQ-FS2_(XHP70)_glass
Lamps: 1 x Cree_XHP70_glass-chassis_260.488lm@250mA_P=1.38405W_I=0.2499A

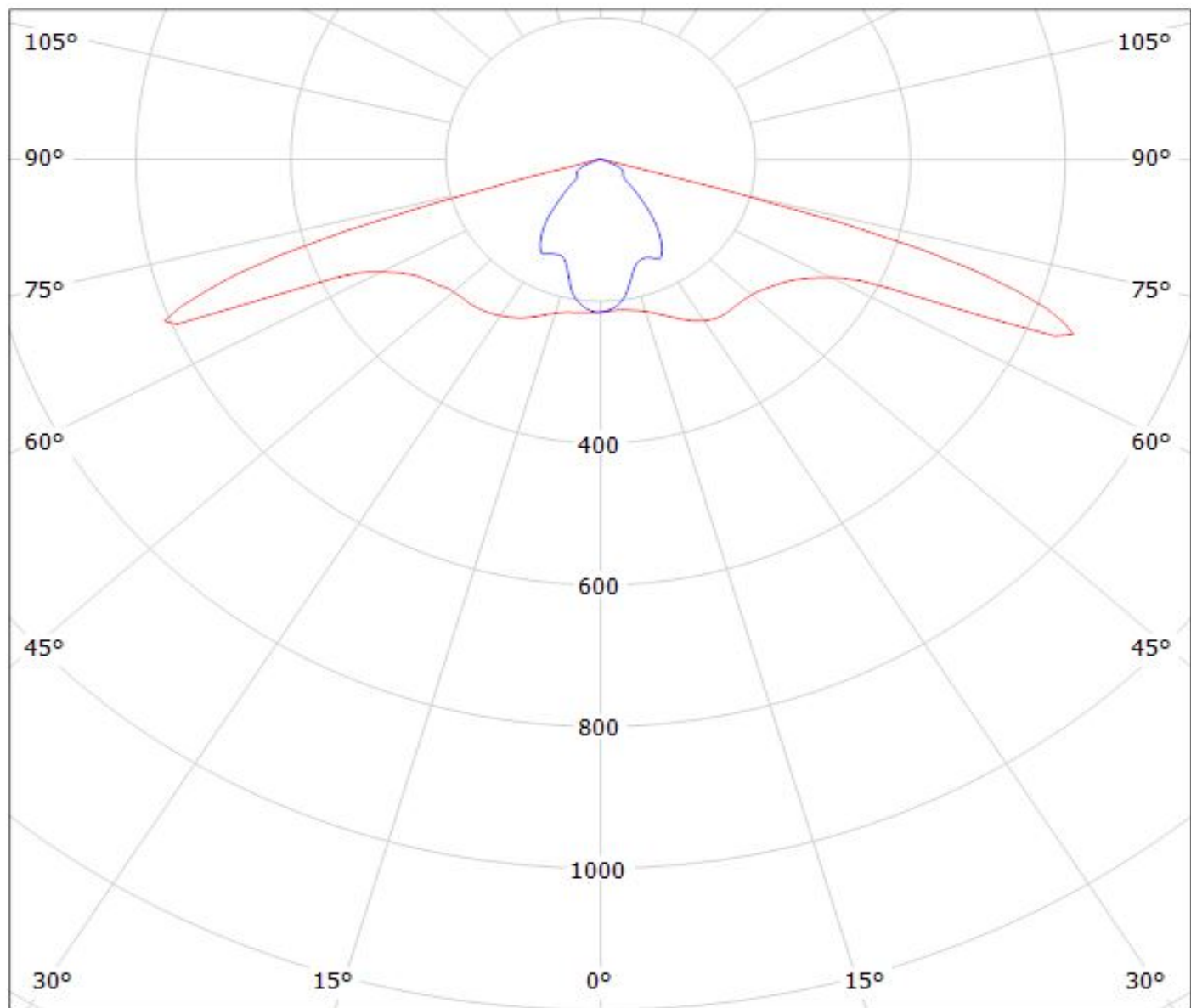


Luminaire: LEDiL Oy STRADA-SQ-FS2 & STRADA-SQ-FS2-NP_(LUXEON_M)_glass
Lamps: 1 x LUXEON_M_(LXR7-SW30)_375lm@250mA_P=2.79W_I=249.8mA



Luminaire: LEDiL Oy CA14120_STRADA-SQ-FS2_(PSL440)

Lamps: 1 x Citizen_PSL440_254.954lm@250mA_P=2.86296W_I=0.250A



cd/klm

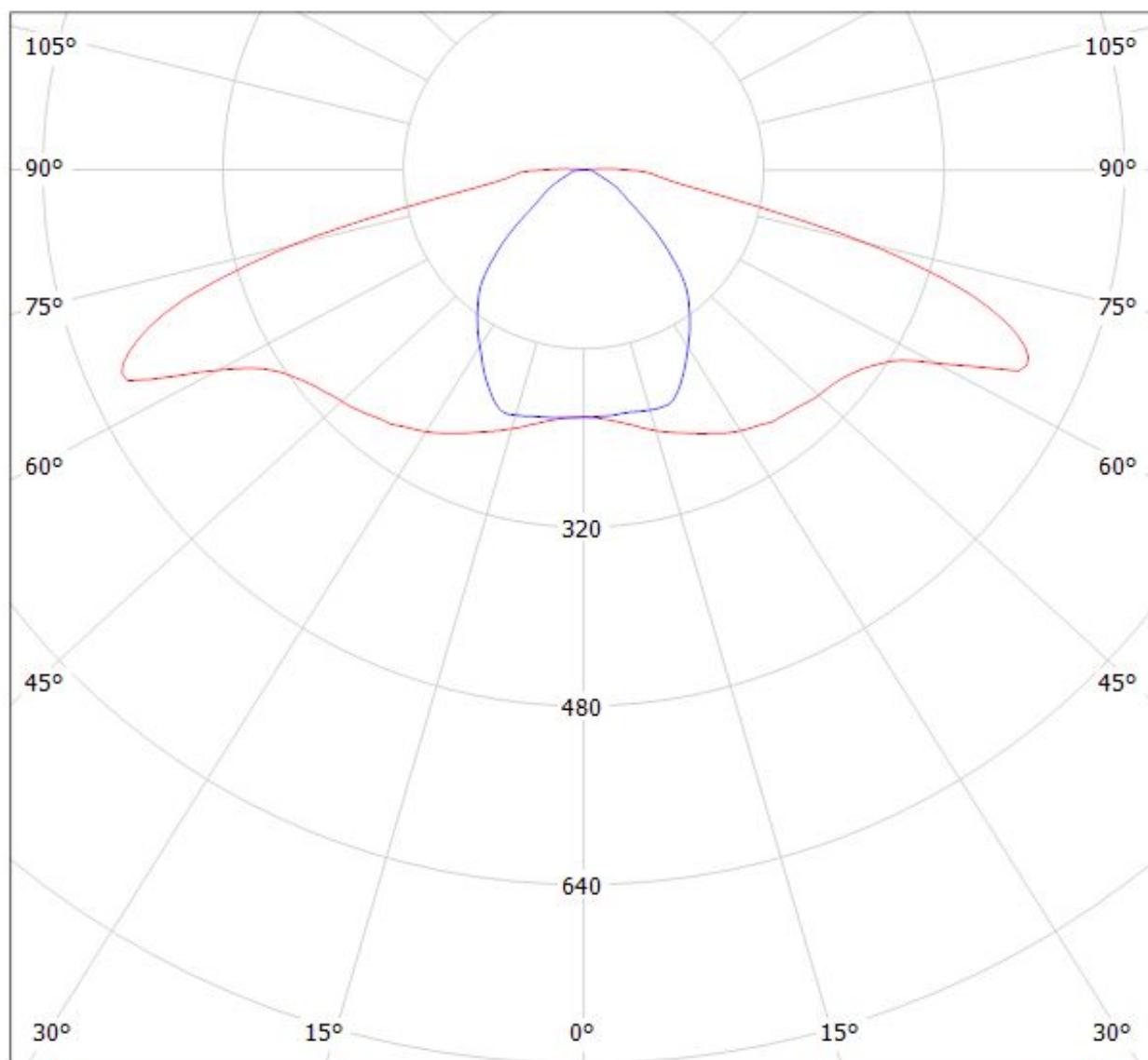
— C0 - C180

— C90 - C270

$\eta = 91\%$

Luminaire: LEDiL Oy C14119_STRADA-SQ-FS2_(PSL445)

Lamps: 1 x Citizen_PSL445_425.848lm@250mA_P=2.8155W_I=0.250A_CCT=2700K



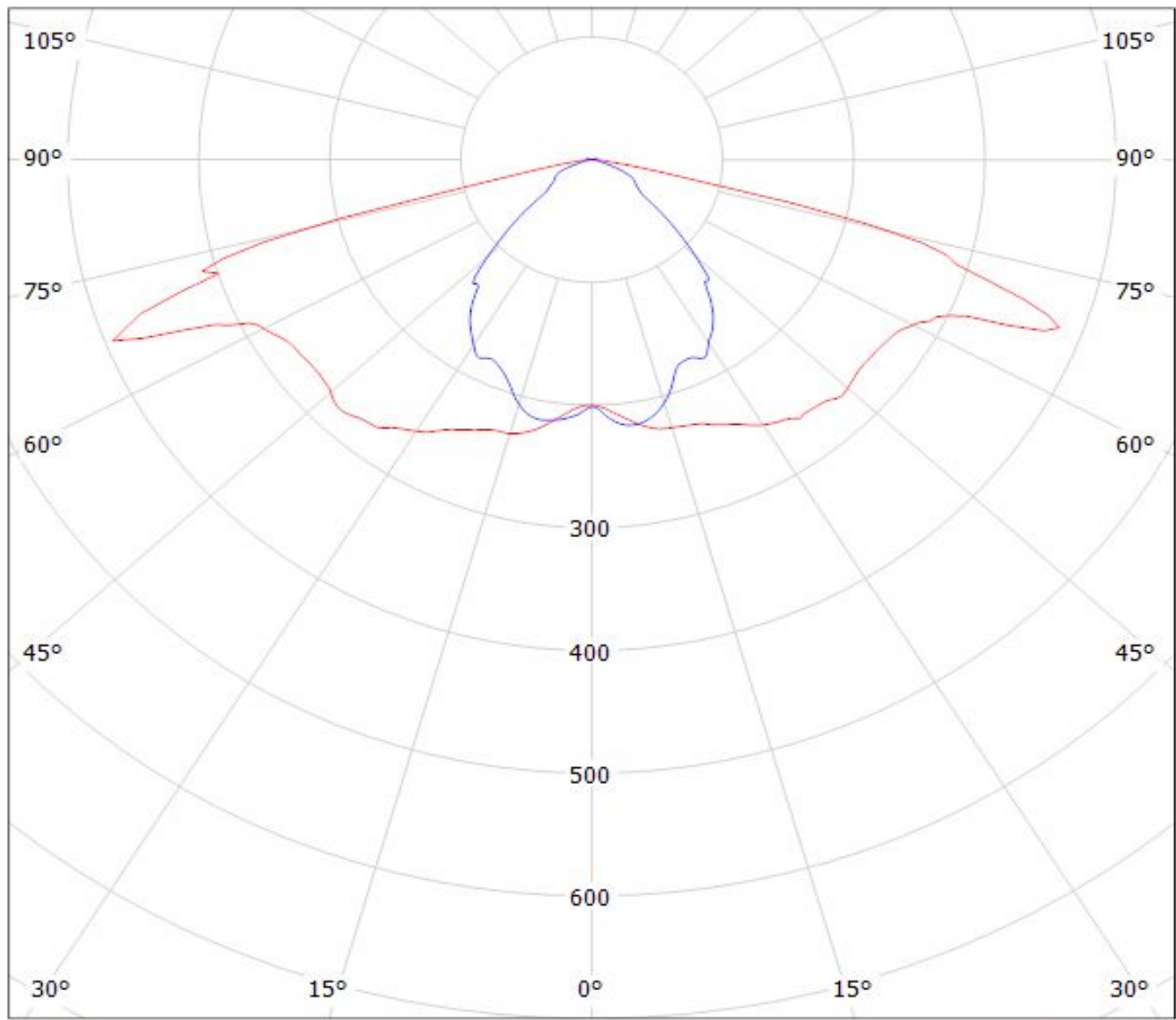
cd/klm

— C0 - C180

— C90 - C270

$\eta = 94\%$

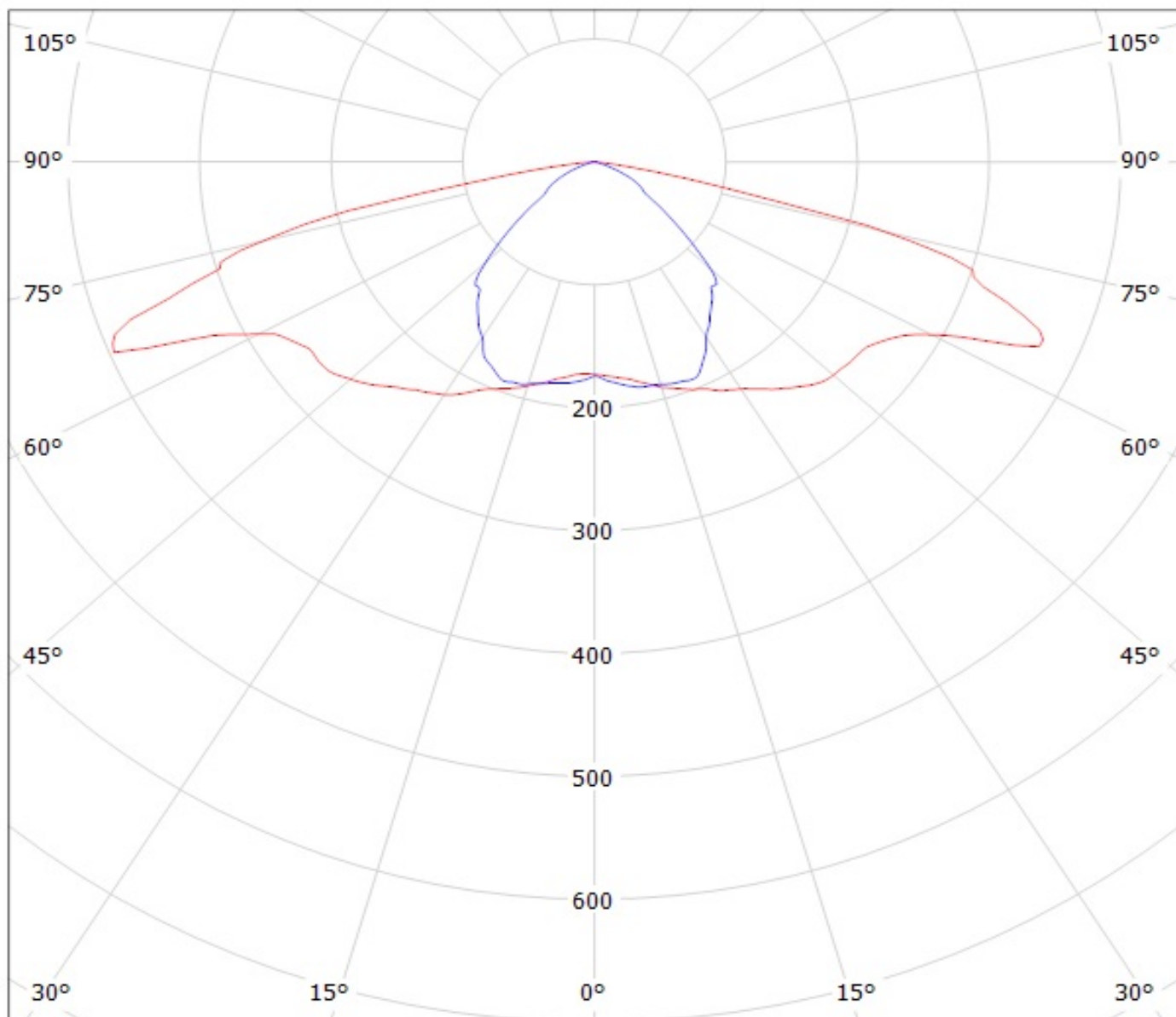
Luminaire: LEDiL Oy C14119_STRADA-SQ-FS2_(MK-R)+glass Eff.83.8%
Lamps: 1 x Cree_MK-R_354.207lm@250mA_CCT=3276K_P=2.84547W_I=249.8mA



cd/klm
— C0 - C180 — C90 - C270

$\eta = 84\%$

Luminaire: LEDiL Oy C14119_STRADA-SQ-FS2_(XHP70)_glass
Lamps: 1 x Cree_XHP70_glass-chassis_260.488lm@250mA_P=1.38405W_I=0.2499A

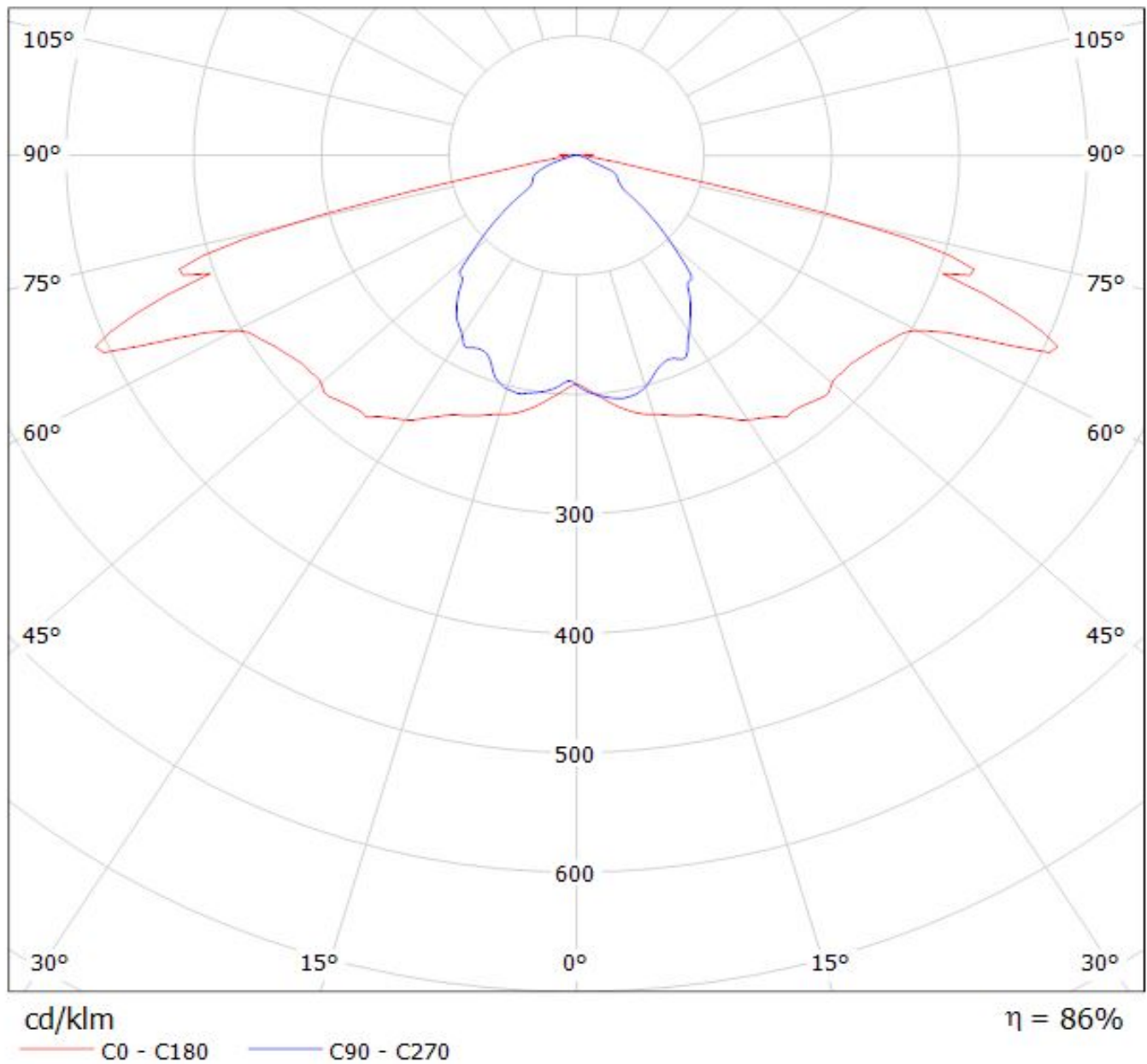


cd/klm

$\eta = 80\%$

— C0 - C180 — C90 - C270

Luminaire: LEDiL Oy STRADA-SQ-FS2 & STRADA-SQ-FS2-NP_(LUXEON_M)_glass
Lamps: 1 x LUXEON_M_(LXR7-SW30)_375lm@250mA_P=2.79W_I=249.8mA



NOTE: The typical divergence will be changed by different color, chip size and chip position tolerance. The typical total divergence is the full angle measured where the luminous intensity is half of the peak value.