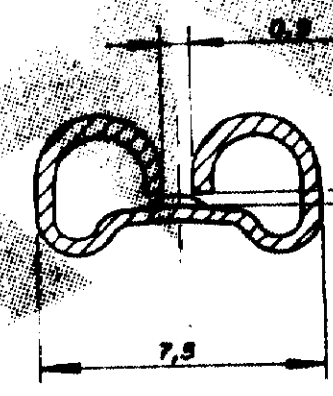
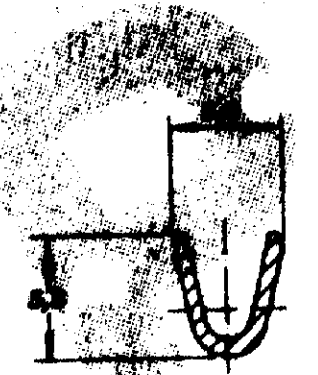
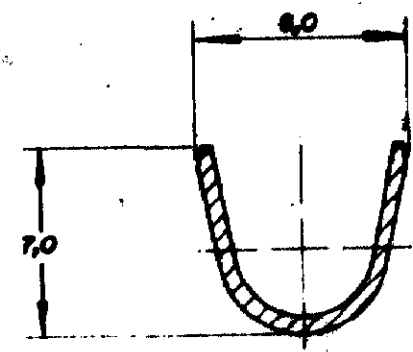
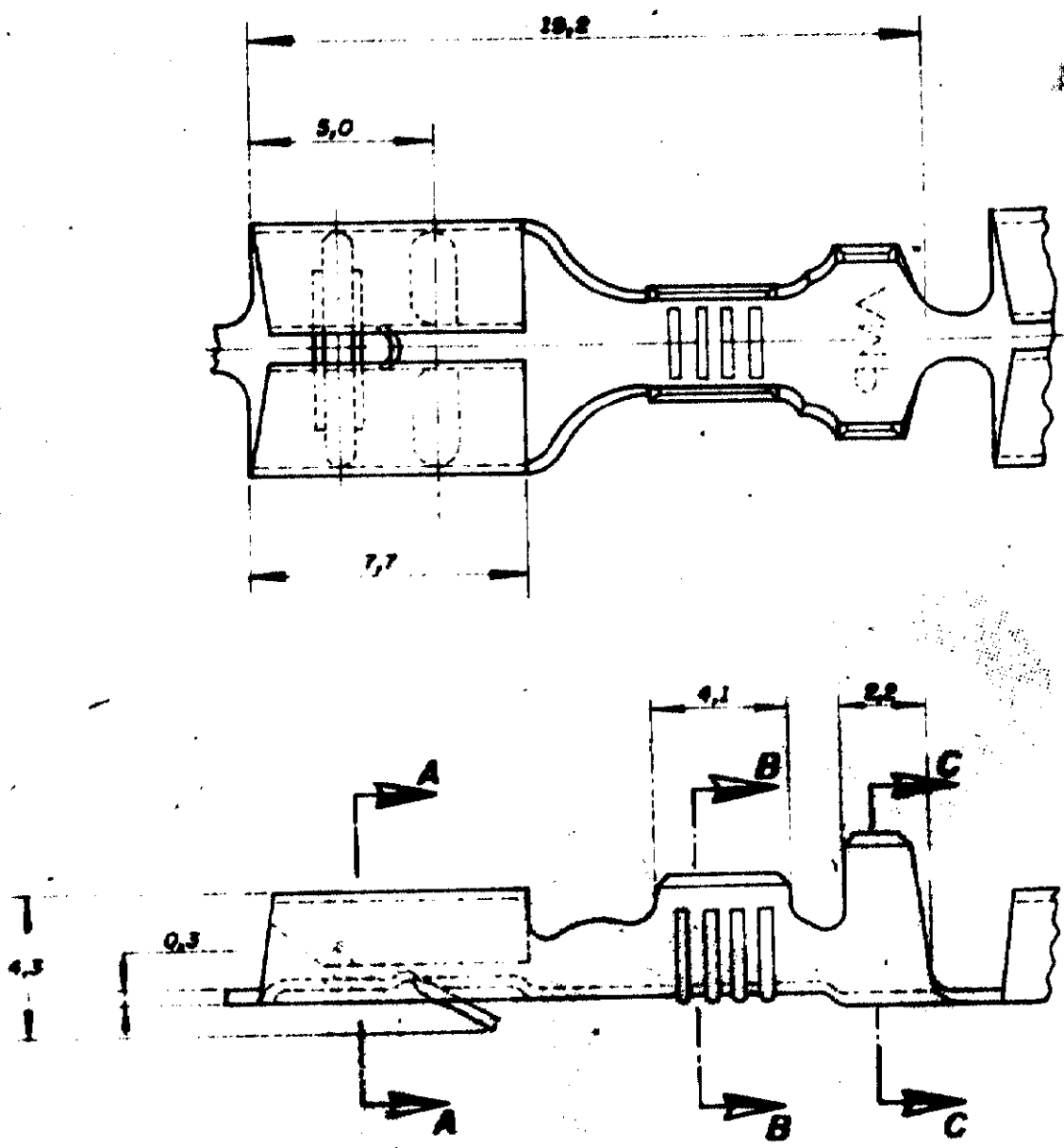


C 626 096

DO NOT SCALE
DIMENSIONS IN

METRIC



PARA LÂMINHAS
DE 0,3 DE ESPESURA

OBSOLETE

OBSOLETE PARTS: OBSOLETE CIS STREAMLINING PER D.RENAUD/D.SINISI

		PRATEADO	BRONZE FOSFOROSO	
		ESTANNADO	LATÃO	
		//	BRONZE FOSFOROSO	(6)
		ESTANNADO	LATÃO	626 096 -1
		//		
OTHER TREATMENT	FINISH	MATERIAL	PART NUMBER	
CUSTOMER DWG for REFERENCE ONLY		THIS DRAWING IS UNPUBLISHED UNLESS FOR PUBLICATION		
		COPYRIGHT © BY AMP DO BRASIL LTDA S.P. ALL INTERNATIONAL RIGHTS RESERVED AND PRODUCTS NOT BE COVERED BY U.S. AND OTHER PATENTS AND/OR TRADE MARKS.		
		TOLERANCES UNLESS OTHERWISE STATED	INS. DIA. RANGE	WIRE RANGE
		SEC. ± 0,3	0,15 - 0,06mm	0,3 - 0,0mm
		ANGLES ± 1°	SCALE //	
		DE PAULO S.B.	AMP AMP do BRASIL LTDA.	
		23-9-87	São Paulo, Brasil	
G1	REV PER ECO-09-026444	KK	AEG	27NOV09
6	REATIVADO - 6	DM		0-0-00
F	REVISADO	PF		23.9.88 DE
E	REDESENHADO	P.S.B		20-0-87
10	REVISION RECORD	DR	CHE	DATE
				APP.
		A3		C 626 096
		SHEET		080-01