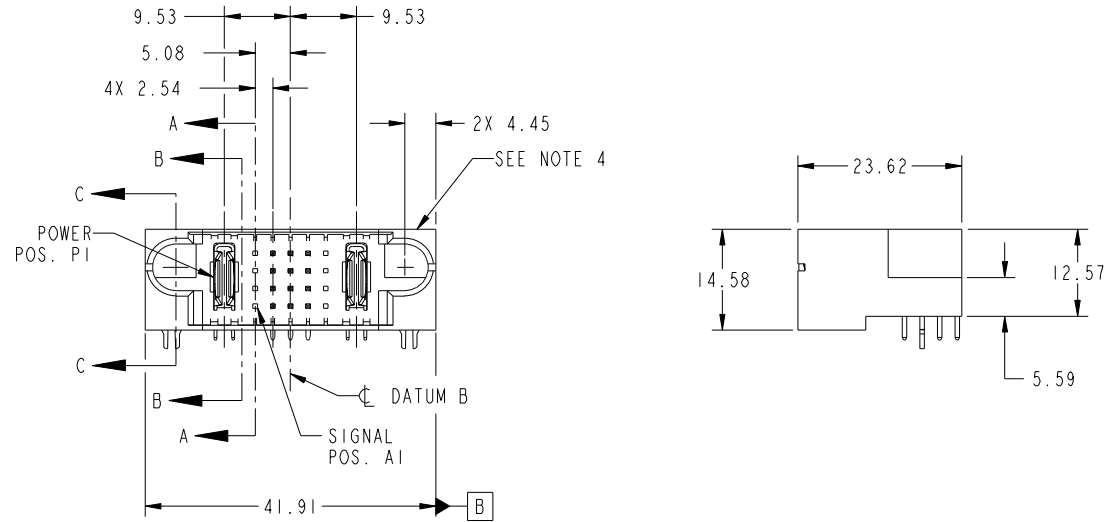


Tous droits strictement reserves. Reproduction ou communication a des tiers interdite sous quelque forme que ce soit sans autorisation écrite du propriétaire. Propriete de c FCI. Droits de reproduction FCI.



All rights strictly reserved. Reproduction or issue to third parties in any form whatever is not permitted without written authority from the proprietor. Property of FCI. Copyright FCI.

PRODUCT NO. 51730-172-- NOTE 3	ROWS DCBA	Pwr		SIGNAL					Pwr			
		E1	P1	1	2	3	4	5	P2	E2		
		HA	PA	X	H	U	X	X	U	X	PA	HA
				X	T	T	X	X	T	X		
				X	S	S	X	X	S	X		
				X	R	R	X	X	R	X		



CODE	DIM "M" MATING LENGTH	CONTACT TYPE
T	[6.86]	SIGNAL
S	[6.86]	SIGNAL
R	[6.86]	SIGNAL
U	[6.86]	SIGNAL
PA	[N/A]	POWER
HA	[N/A]	HOLD-DOWN
H	[5.59]	SIGNAL
X	OMITTED	

mat'l code				SEE NOTE		tolerances unless otherwise specified		CUSTOMER		FCI	
ltr	ecn no.	dr	date	linear	0.X ± 0.5	COPY		www.fciconnect.com		title	
A	DG10-0148	HW	4/21/10		0.XX ± 0.25	projection		IP + 20S + 1P		RIGHT ANGLE SOLDER HEADER	
B	DG10-0174	HW	5/10/10	angles	0.XXX ± 0.1	MIM		product family		PwrBlade	code
				dr	0° + 2°	scale		size	dwg no	213	
				enr	HENRY WANG 4/21/10	1:1		A	51730-172	sheet	
				chr	PM ZHENG 4/21/10					1 of 4	
				appd	JOSEPH HSIA 4/21/10						
sheet index	revision sheet	B 1	B 2	B 3	B 4						

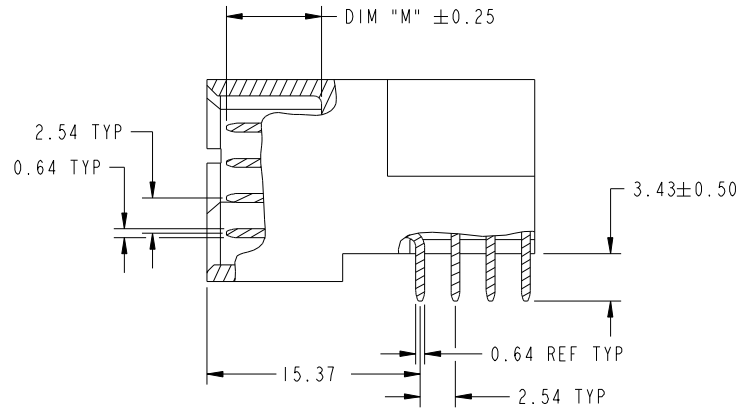
cage code 22526

Tous droits strictement reserves. Reproduction ou communication a des tiers interdite sous quelque forme que ce soit sans autorisation écrite du propriétaire. Propriete de c FCI. Droits de reproduction FCI.

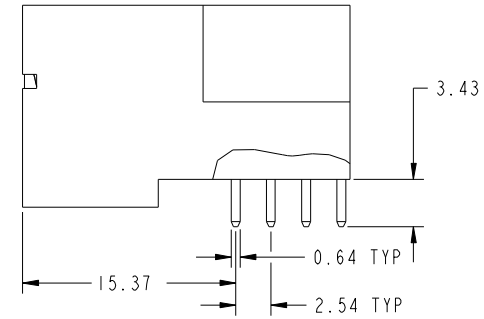
All rights strictly reserved. Reproduction or issue to third parties in any form whatever is not permitted without written authority from the proprietor. Property of FCI. Copyright FCI.



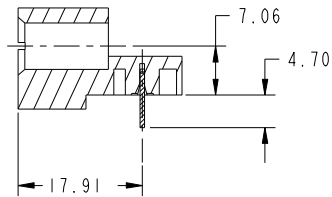
PRODUCT NUMBER
51730-172--
NOTE: 3



BROKEN-OUT SECTION A-A
SCALE 2:1
SIGNAL COLUMN 2 REPLACEMENT



BROKEN-OUT SECTION B-B
SCALE 2:1



SECTION C-C

mat'l code		SEE NOTE		tolerances unless otherwise specified		CUSTOMER		FCI	
ltr	ecr no.	dr	date	linear	0.X ±0.5	COPY		www.fciconnect.com	
B					0.XX ±0.25	projection		title	
				angles	0.XXX ±0.1			IP + 20S + 1P RIGHT ANGLE SOLDER HEADER	
				dr	0° ±2°			product family	
				enr	HENRY WANG 4/21/10	scale		PwrBlade	
				chr	HENRY WANG 4/21/10	1:1		code	
				appd	PM ZHENG 4/21/10	A		213	
					JOSEPH HSIA 4/21/10			sheet	
sheet index	revision sheet							2 of 4	
								cage code	
								22526	

Pro/E

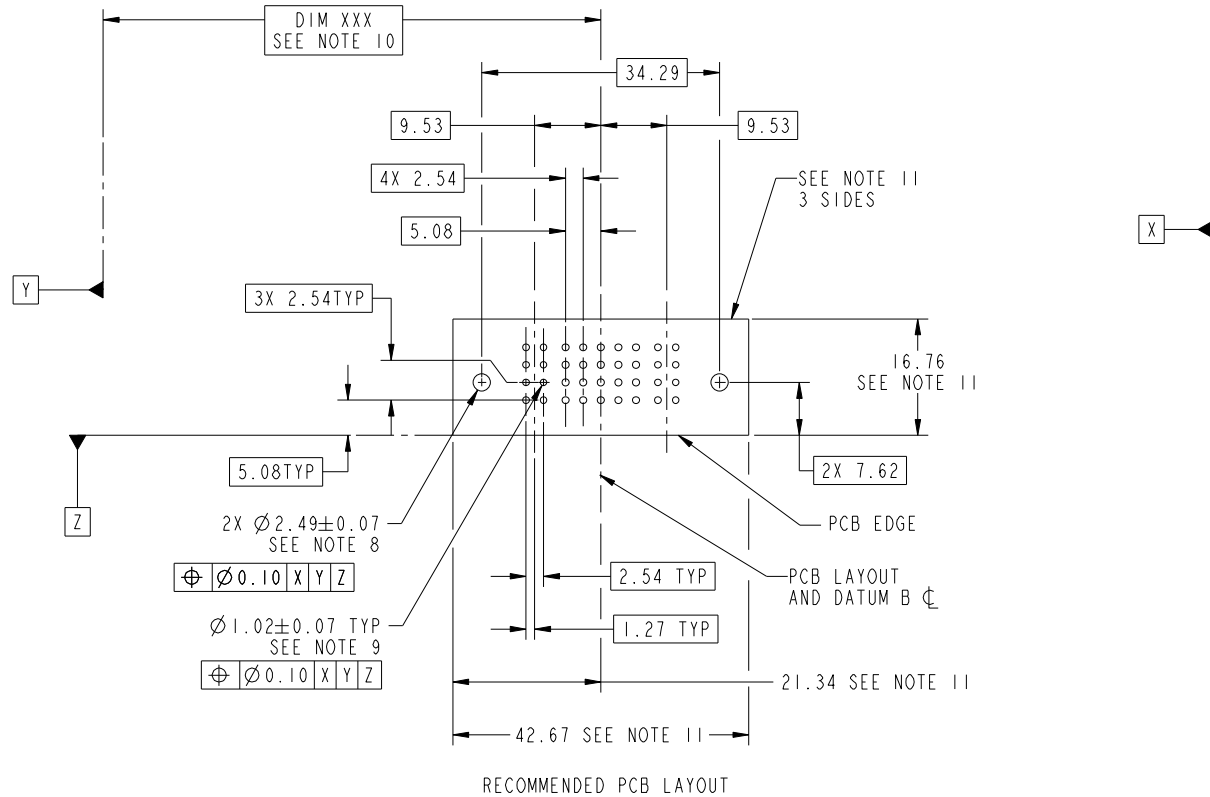
cage code 22526

Tous droits strictement réservés. Reproduction ou communication a des tiers interdite sous quelque forme que ce soit sans autorisation écrite du propriétaire. Propriété de c FCI. Droits de reproduction FCI.



All rights strictly reserved. Reproduction or issue to third parties in any form whatever is not permitted without written authority from the proprietor. Property of FCI. Copyright FCI.

PRODUCT NUMBER
51730-172__
NOTE: 3



mat'l code		SEE NOTE		tolerances unless otherwise specified		CUSTOMER		 www.fciconnect.com	
ltr	ecn no.	dr	date	linear	0.X ±0.5	COPY		title	
B					0.XX ±0.25	projection		IP + 20S + 1P RIGHT ANGLE SOLDER HEADER	
				angles	0.XXX ±0.1			product family	
		dr	HENRY WANG	4/21/10	0° ±2°	MIM		PwrBlade	
		enr	HENRY WANG	4/21/10				code	
		chr	PM ZHENG	4/21/10		scale		213	
		appd	JOSEPH HSIA	4/21/10		1:1		sheet	
sheet index		revision sheet						3 of 4	
								A 51730-172	

cage code 22526

Pro/E

Tous droits strictement reserves. Reproduction ou communication a des tiers interdite sous quelque forme que ce soit sans autorisation écrite du propriétaire. Propriete de c FCI. Droits de reproduction FCI.



All rights strictly reserved. Reproduction or issue to third parties in any form whatever is not permitted without written authority from the proprietor. Property of FCI. Copyright FCI.

PRODUCT NUMBER
51730-172--
NOTE: 3

NOTES:

1. DIMENSIONS AND TOLERANCES ARE IN ACCORDANCE WITH ASME Y14.5M, 1994 UNLESS OTHERWISE SPECIFIED.

CONNECTOR NOTES:

- 2. HOUSING MATERIAL: UL 94 V-0 GLASS FILLED HIGH-TEMP THERMOPLASTIC
POWER CONTACT MATERIAL: COPPER ALLOY
SIGNAL PIN MATERIAL: COPPER ALLOY
- 3. SEE ITEM 1 & 2 IN PRINT 10064183 FOR PLATING SPEC OF 51730-172 AND 51730-172LF RESPECTIVELY.
- 4. MANUFACTURER'S NAME, DATE CODE AND OPTIONAL P/N TO APPEAR ON THIS SURFACE. THE P/N CAN BE OMITTED IF THERE IS NOT ENOUGH SPACE ON THIS SURFACE
- 5. PRODUCT SPECIFICATION GS-12-149.
APPLICATION SPECIFICATION BUS-20-067.
- 6. PACKAGED IN TRAYS.

PCB NOTES:

- 7. ALL HOLE DIAMETERS ARE FINISHED HOLE SIZE.
- 8. MOUNTING HOLES, WHERE APPLICABLE, ARE UNPLATED.
- 9. $\varnothing 1.151 \pm 0.025$ DRILLED HOLES PLATED WITH
0.008 MIN SnPb OR Sn OVER 0.03
TO 0.08 Cu PLATING TO ACHIEVE
 $\varnothing 1.02 \pm 0.07$ HOLE.
- 10. "DIM XXX" TO BE DETERMINED BY THE CUSTOMER.
- 11. CONNECTOR KEEP-OUT ZONE.

mat'l code		SEE NOTE		tolerances unless otherwise specified		CUSTOMER		FCI		www.fciconnect.com	
ltr	ecn no.	dr	date	linear	0.X ± 0.5	COPY		 title IP + 20S + 1P RIGHT ANGLE SOLDER HEADER			
B					0.XX ± 0.25	projection					
				angles	0.XXX ± 0.1	 MIM					
				dr	HENRY WANG 4/21/10	product family		PwrBlade	code	213	
				enr	HENRY WANG 4/21/10	size		dwg no	sheet	4 of 4	
				chr	PM ZHENG 4/21/10	scale		A	51730-172		
				appd	JOSEPH HSIA 4/21/10	1:1					
sheet index	revision sheet										

cage code 22526

Pro/E