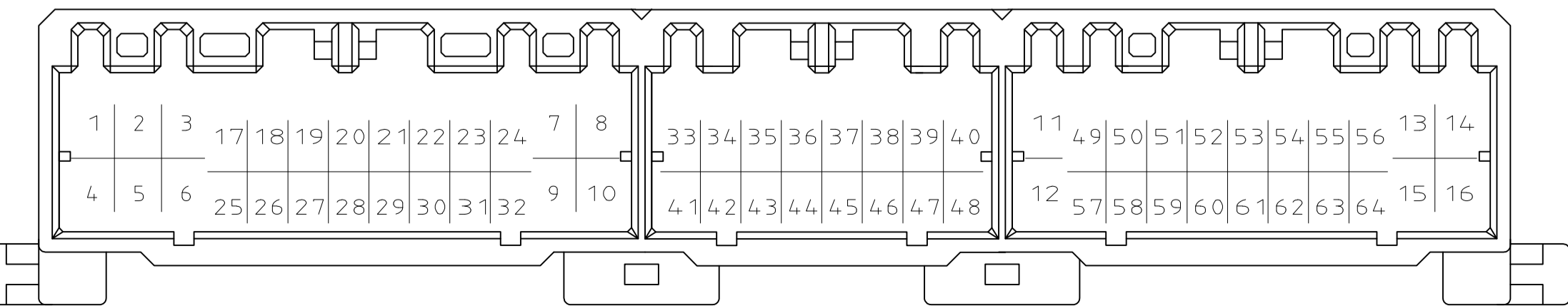
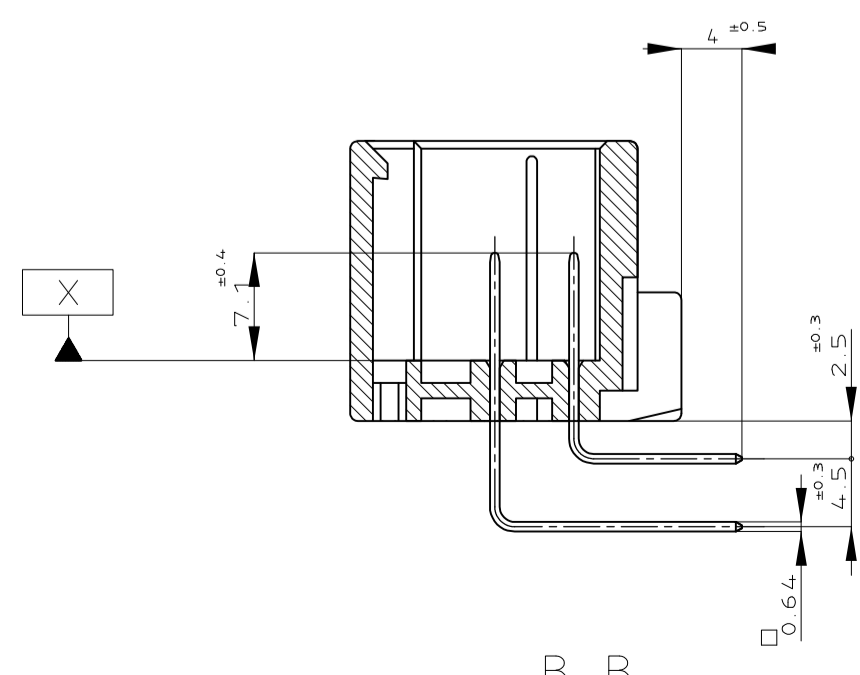
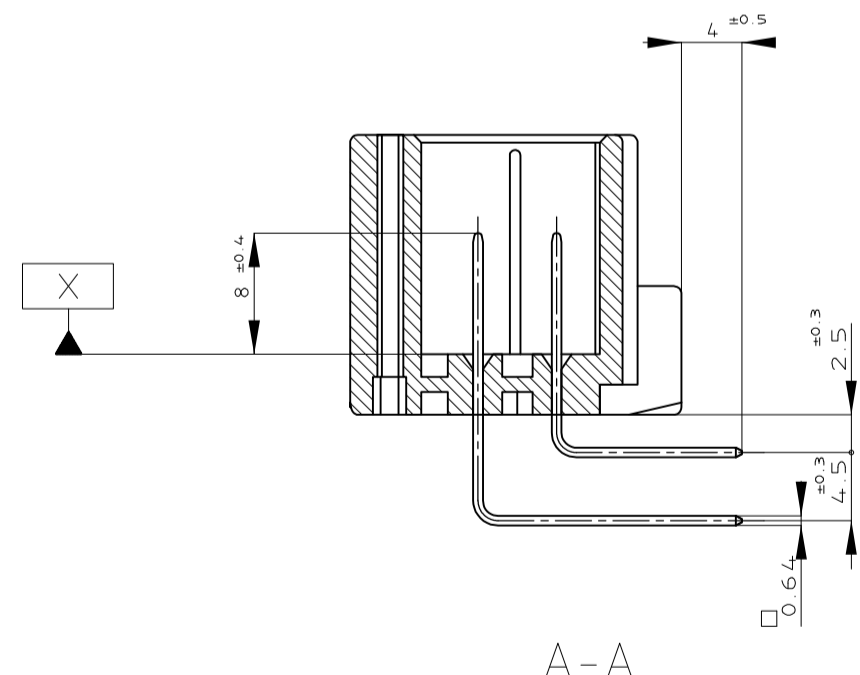


- 1 MUST BE KEPT BETWEEN [X] AND 2
- △ THE MATING PLUG HSG PART NUMBER : 174516, 174515, 174514, 917992, 917989, 917981
- 3 RECOMMENDED MOUNTING SCREW, 3mm DIA, 6mm LENGTH (MAX.) PAN HEAD, CLASS 2 TAPPING SCREW SPECIFIED IN JIS B1115, B1122 (TIGHTENING TORQUE: 0.4N·m MAX.)
- 4 APPLICABLE PRODUCT SPEC NO. 108-5280, 108-5342
- △ CIRCUIT NUMBER
 POWER CIRCUIT NO. ①~⑫
 SIGNAL CIRCUIT NO. ⑬~⑳
- △ INDICATED PREFIX AND ID MARK OF PRODUCT P/N BY COLOR HOT MARK
- △ PCB SIDE OF GOLD PLATING TAB IS TIN PLATE
- △ USING "X" REPLACE "-" (P/N MARK)
- EXAMPLE "1XD"

- △ [X] 面から 2mm の範囲で測定
- 2 推奨相手ハウジング型 174516, 174515, 174514, 917992, 917989, 917981
- 3 推奨取付ねじ; JIS B1115, B1122 カホンねじ、なべ2種
 呼び径 3、長さ 6mm 以下 (締付けトルク: 0.4N·m 以下)
- 4 適用製品規格番号: 108-5280, 108-5342
- △ 回路番号: 下図参照のこと
 パワー回路 ①~⑫
 シグナル回路 ⑬~⑳
- △ 適用製品型番のアフィックス及び ID マークを
 カラーホットマークにて表示
- △ 全メッキタブは、基板側に鉛メッキを行う
- △ P/N 177609-2 に限り、ホットマークに "-" (P/N MARK) ではなく "X" を使用する
 例 1XD



MARKING/COLOR	PLC	FINISH	CONTACT SIDE	POWER CIRCUIT NO.	SIGNAL CIRCUIT NO.	HOUSING COLOR	PART NUMBER
59- BLACK	SELECTIVE-TIN (MATTE)	SELECTIVE GOLD x 5	---	---	---	NATURAL	9-5177609-1
57- BLACK	SELECTIVE-TIN (MATTE)	SELECTIVE GOLD x 8	---	---	---	NATURAL	7-5177609-1
54- WHITE	SELECTIVE-TIN (MATTE)	SELECTIVE GOLD x 25	---	---	---	BLACK	4-5177609-2
58- BLACK	SELECTIVE-TIN (MATTE)	SELECTIVE GOLD x 8	---	---	---	NATURAL	8-5177609-1
55- WHITE	SELECTIVE-TIN (MATTE)	SELECTIVE GOLD x 11	---	---	---	GRAY	5-5177609-6
54- WHITE	SELECTIVE-TIN (MATTE)	SELECTIVE GOLD x 25	---	---	---	GRAY	4-5177609-6
54- BLACK	SELECTIVE-TIN (MATTE)	SELECTIVE GOLD x 25	---	---	---	NATURAL	4-5177609-1
53- BLACK	SELECTIVE-TIN (MATTE)	SELECTIVE GOLD x 10	---	---	---	YELLOW	3-5177609-7
52- WHITE	SELECTIVE-TIN (MATTE)	SELECTIVE GOLD x 18	7~9	---	---	GRAY	2-5177609-6
50- WHITE	SELECTIVE-TIN (MATTE)	SELECTIVE GOLD x 11	---	---	---	LIGHT GRAY	5177609-1
9- BLACK	TIN-LEAD	SELECTIVE GOLD x 5	---	---	---	NATURAL	9-177609-1
8- BLACK	TIN-LEAD	SELECTIVE GOLD x 8	---	---	---	NATURAL	8-177609-1
7- BLACK	TIN-LEAD	SELECTIVE GOLD x 8	---	---	---	NATURAL	7-177609-1
6- WHITE	TIN-LEAD	SELECTIVE GOLD x 9	---	---	---	GRAY	6-177609-6
5- WHITE	TIN-LEAD	SELECTIVE GOLD x 11	---	---	---	GRAY	5-177609-6
4- WHITE	TIN-LEAD	SELECTIVE GOLD x 25	---	---	---	GRAY	4-177609-6
4- BLACK	TIN-LEAD	SELECTIVE GOLD x 25	---	---	---	BLACK	4-177609-2
4- BLACK	TIN-LEAD	SELECTIVE GOLD x 25	---	---	---	NATURAL	4-177609-1
3- BLACK	TIN-LEAD	SELECTIVE GOLD x 10	---	---	---	YELLOW	3-177609-7
2- WHITE	TIN-LEAD	SELECTIVE GOLD x 18	7~9	---	---	GRAY	2-177609-6
1X BLACK	TIN-LEAD	SELECTIVE GOLD x 11	---	---	---	LIGHT GRAY	177609-2
0- WHITE	TIN-LEAD	SELECTIVE GOLD x 11	---	---	---	LIGHT GRAY	177609-1

THIS DRAWING IS A CONTROLLED DOCUMENT. DIN K. FURUYAMA 30JAN02
 C/K. YAMAGAMI 31JAN02
 H. YAMAGAMI 31JAN02

TE Connectivity
 .040/.070 SERIES HYBRID I/O CONN.
 64 POSITION CAP HOUSING ASSY

0.40/.070 SERIES HYBRID I/O CONN.
 64 POSITION CAP HOUSING ASSY

WEIGHT 28.4 g
 A1 00779 © 177609

CUSTOMER DRAWING SCALE 2:1 SHEET 1 OF 1 REV H4