

**DESIGNED & DIMENSIONED
IN MILLIMETERS[INCHES]**

MMCX7-P-C-XX-RA-CA3

TABLE 1			
ITEM	COMPONENT	-HF	-GF
1	SUB ASSEMBLY	SUB-GRF7V-P-C-HF-RA-CA3	SUB-GRF7V-P-C-GF-RA-CA3
2	FERRULE	MCX-FER-001-F	MCX-FER-001-N
3	INSULATOR	MMCX-INS-001	
4	CAP	MMCX-CAP-001-F	MMCX-CAP-001-N

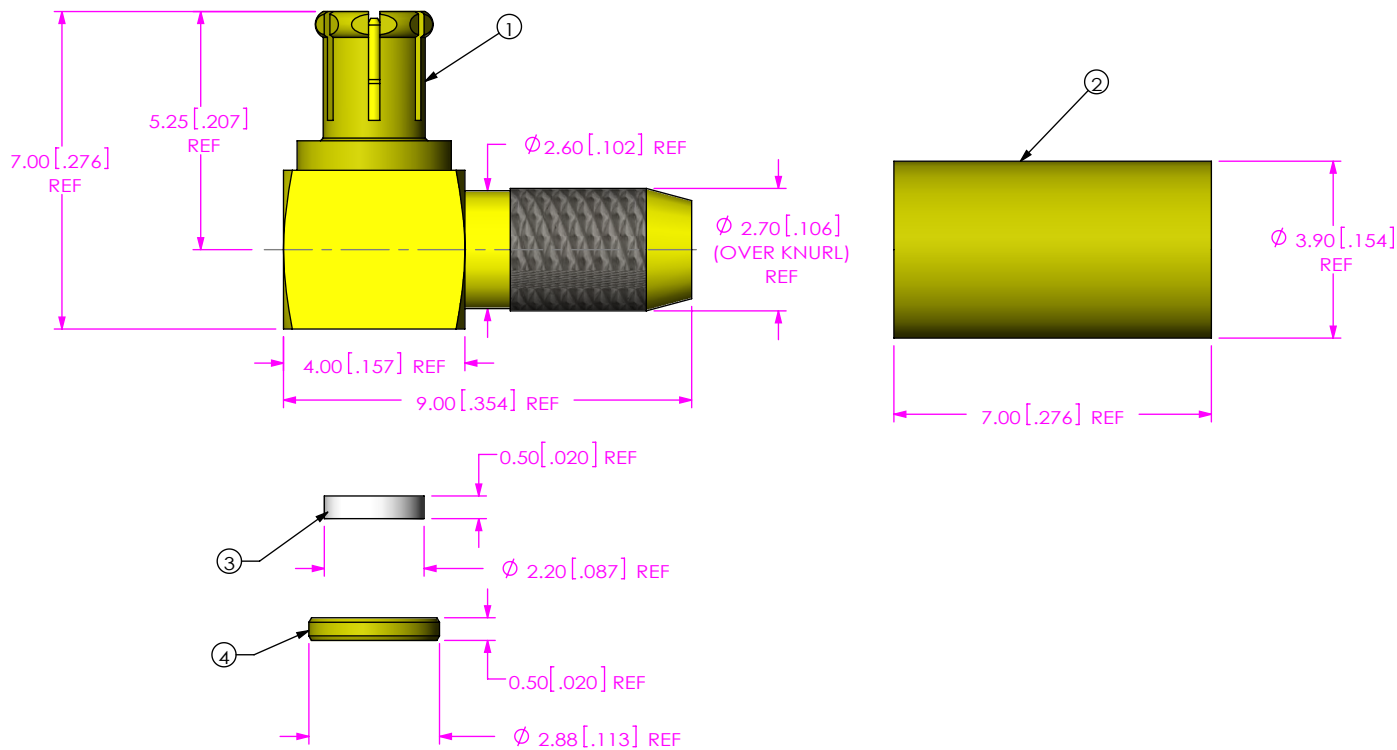
DO NOT
SCALE FROM
THIS PRINT

TERMINATION
-CA3: CABLE (RG179)

ORIENTATION
-RA: RIGHT ANGLE

TYPE
-C: CABLE

PLATING SPECIFICATION
-HF: 30µ" GOLD CENTER CONTACT,
3µ" GOLD OUTER CONTACT
-GF: 10µ" GOLD CENTER CONTACT,
3µ" GOLD OUTER CONTACT
100µ" NICKEL REMAINING PARTS
(SEE TABLE 1)



NOTES:

- NOTE DELETED.
- PRODUCT TO BE BULK PACKAGED PER PACKAGING STANDARD CO-RF-WI-3040-M.
- NOTE DELETED.

**UNLESS OTHERWISE SPECIFIED,
DIMENSIONS ARE IN MILLIMETERS.**

TOLERANCES ARE:
DECIMALS ANGLES
X.X: ±0.3 [.01] 5°
X.XX: ±0.13 [.005]
X.XXX: ±0.051 [.0020]

PROPRIETARY NOTE
THIS DOCUMENT CONTAINS CONFIDENTIAL AND PROPRIETARY INFORMATION AND ALL DESIGN, MANUFACTURING, REPRODUCTION, USE, PATENT RIGHTS AND SALES RIGHTS ARE EXPRESSLY RESERVED BY SAMTEC, INC. THIS DOCUMENT SHALL NOT BE DISCLOSED, IN WHOLE OR PART, TO ANY UNAUTHORIZED PERSON OR ENTITY NOR REPRODUCED, TRANSFERRED OR INCORPORATED IN ANY OTHER PROJECT IN ANY MANNER WITHOUT THE EXPRESS WRITTEN CONSENT OF SAMTEC, INC.



520 PARK EAST BLVD, NEW ALBANY, IN 47150
PHONE: 812-944-6733 FAX: 812-948-5047
e-Mail info@SAMTEC.com code 55322

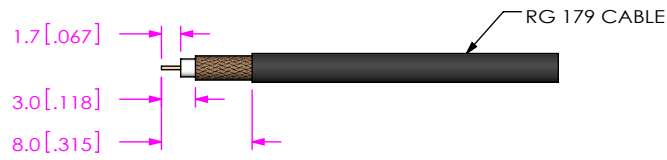
MATERIAL: DO NOT SCALE DRAWING SHEET SCALE: 6:1

SHELL: BeCu
CABLE BODY, PIN, FERRULE, CAP: BRASS
INSULATOR: PTFE

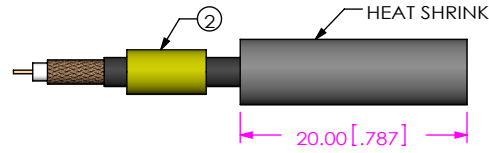
DESCRIPTION:
TRUE 75 OHM, MMCX RIGHT ANGLE PLUG, RG179

DWG. NO.
MMCX7-P-C-XX-RA-CA3

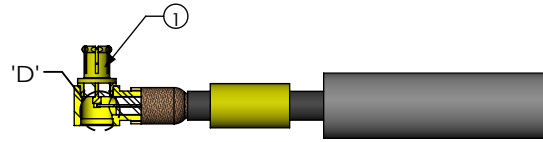
BY: ALVIN W 10/08/2011 SHEET 1 OF 2



IN PROCESS 1
STRIP CABLE AND TIN INNER CONDUCTOR

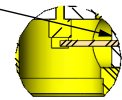


IN-PROCESS 2
ADD HEAT SHRINK TUBE & FERRULE

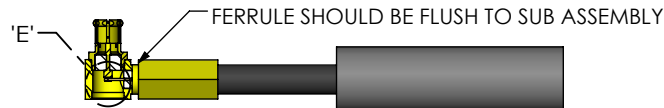


IN-PROCESS 3
FLARE SHIELD & ADD SUB ASSEMBLY

END OF CABLE DIELECTRIC
SHOULD SEAT AGAINST
CONTACT CUP

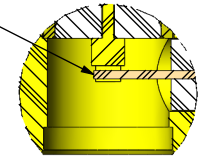


DETAIL 'D'
SCALE 4 : 1



IN-PROCESS 4
CRIMP FERRULE
(USE CRIMP HAND TOOL #CAT-RF-FER-01, AND .128" DIE SIZE)

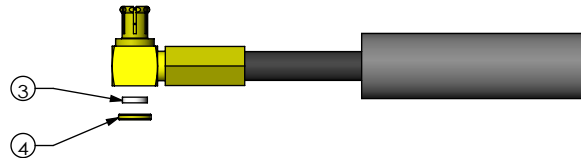
CABLE CENTER CONDUCTOR
SHOULD NOT PROTRUDE
OUTSIDE CONTACT CUP
AFTER FERRULE IS CRIMPED



DETAIL 'E'
SCALE 6 : 1



IN-PROCESS 5
SOLDER SIGNAL SOCKET



IN-PROCESS 6
PRESS INSULATOR AND CAP WITH CHAMFERED EDGE INWARDS



IN PROCESS 7
ACTIVATE HEAT SHRINK

PROPRIETARY NOTE
THIS DOCUMENT CONTAINS CONFIDENTIAL AND PROPRIETARY INFORMATION AND ALL DESIGN, MANUFACTURING, REPRODUCTION, USE, PATENT RIGHTS AND SALES RIGHTS ARE EXPRESSLY RESERVED BY SAMTEC, INC. THIS DOCUMENT SHALL NOT BE DISCLOSED, IN WHOLE OR PART, TO ANY UNAUTHORIZED PERSON OR ENTITY NOR REPRODUCED, TRANSFERRED OR INCORPORATED IN ANY OTHER PROJECT IN ANY MANNER WITHOUT THE EXPRESS WRITTEN CONSENT OF SAMTEC, INC.

DO NOT SCALE DRAWING

SHEET SCALE: 3:2



520 PARK EAST BLVD, NEW ALBANY, IN 47150
PHONE: 812-944-6733 FAX: 812-948-5047
e-Mail info@SAMTEC.com code 55322

DESCRIPTION:
TRUE 75 OHM, MMCX RIGHT ANGLE PLUG, RG179

DWG. NO.
MMCX7-P-C-XX-RA-CA3

BY: ALVIN W 10/08/2011 SHEET 2 OF 2