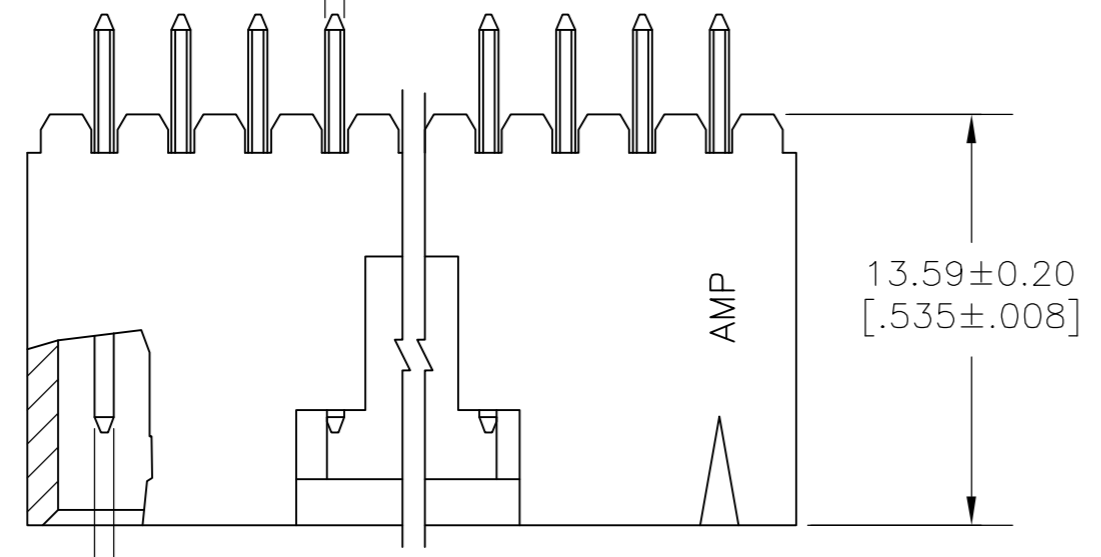


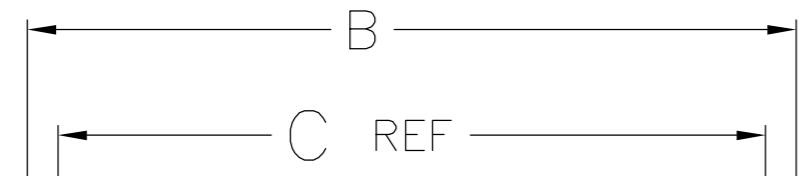
THIS DRAWING IS UNPUBLISHED. RELEASED FOR PUBLICATION  
 © COPYRIGHT BY TYCO ELECTRONICS CORPORATION. ALL RIGHTS RESERVED.

| LOC |    | DIST |     | REVISIONS    |         |     |      |
|-----|----|------|-----|--------------|---------|-----|------|
| AD  | 00 | P    | LTR | DESCRIPTION  | DATE    | DWN | APVD |
|     |    | H1   |     | ECO-05-10198 | 20MAR06 | MB  | JLG  |

$\phi 0.38[.015]$  (M)  
TYP AT POST TIPS



$\phi 0.38[.015]$  (M)  
TYP AT POST TIPS



$3.05^{+0.13}_{-0.18}$   
[.120<sup>+</sup>.005  
-.007]

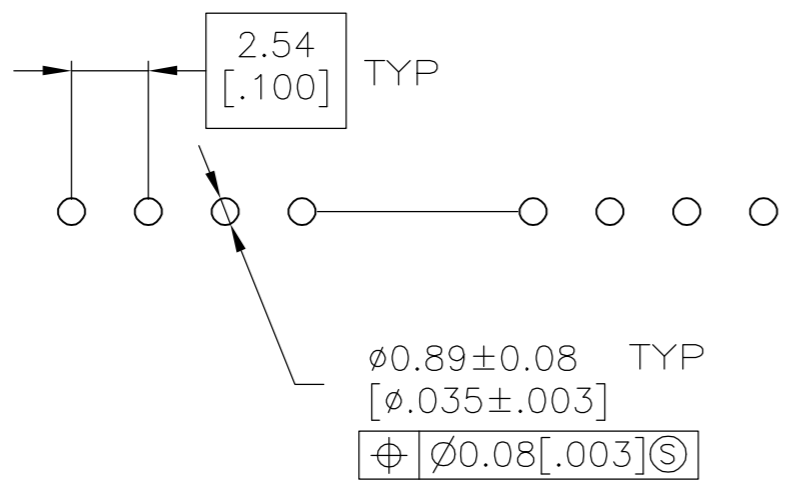
$1.52 \pm 0.08$   
[.060 ± .003]

2.54  
[.100]

$5.08 \pm 0.08$   
[.200 ± .003]

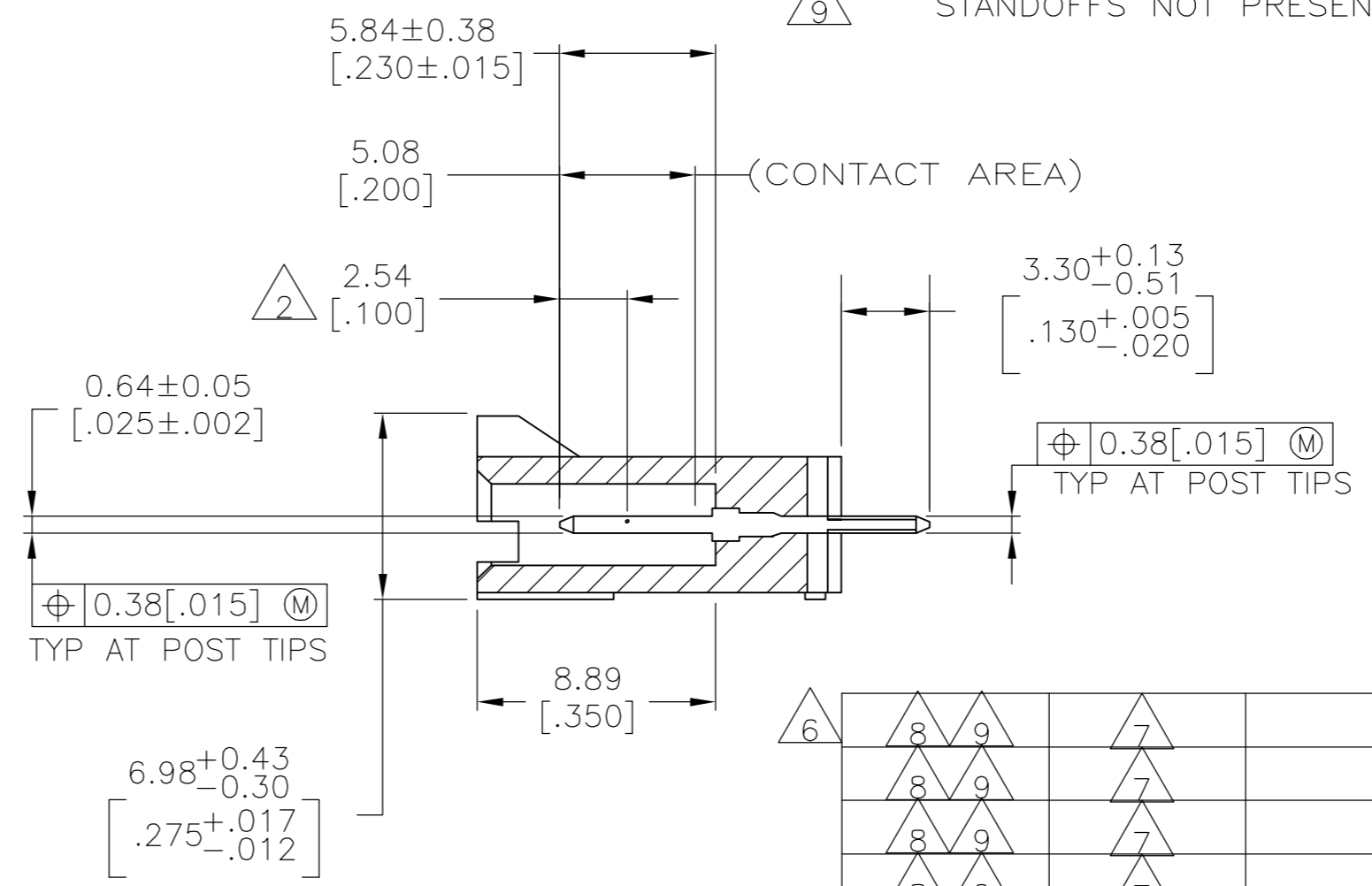
$1.52 \pm 0.08$   
[.060 ± .003]

POSN NO. REF  
(SEE TABLE)



RECOMMENDED HOLE LAYOUT

- 1 .00254[.000100] BRIGHT TIN-LEAD OVER .00127[.000050] NICKEL.
- 2 POINT OF MEASUREMENT FOR PLATING THICKNESS.
- 3 THE NOTED DIMENSIONS APPLY AT THE INTERSECTION OF THE POST AND THE HOUSING.
- 4 ON ASSEMBLIES WITH FOUR OR MORE POSITIONS, TWO POLARIZATION SLOTS. ON ASSEMBLIES WITH TWO OR THREE POSITIONS, ONE POLARIZATION SLOT.
- 5 POSITION NOTED FOR REFERENCE ONLY.
- 6 PRELIMINARY PART-NOT RELEASED FOR PRODUCTION.
- 7 .00254[.000100] MATTE TIN OVER .00127[.000050] NICKEL.
- 8 HIGH TEMPERATURE CONFIGURATION
- 9 STANDOFFS NOT PRESENT ON UNDERSIDE OF ASSEMBLY



| REMARKS | PLATING | POSITIONS OMITTED | C  | B             | A             | NO. OF POSN | PART NO.   |
|---------|---------|-------------------|----|---------------|---------------|-------------|------------|
|         | 8 9     | 7                 | 16 | 48.77 [1.920] | 50.8 [2.000]  | 18 19       | 5-147969-5 |
|         | 8 9     | 7                 | 17 | 48.77 [1.920] | 50.8 [2.000]  | 18 19       | 5-147969-4 |
|         | 8 9     | 7                 | 10 | 28.45 [1.120] | 30.48 [1.200] | 10 11       | 5-147969-3 |
|         | 8 9     | 7                 | 19 | 51.31 [2.020] | 53.34 [2.100] | 19 20       | 5-147969-2 |
|         | 8 9     | 7                 | 2  | 8.13 [.320]   | 10.16 [.400]  | 2 3         | 5-147969-1 |
|         |         | 1                 | 18 | 51.31 [2.020] | 53.34 [2.100] | 19 20       | 147969-6   |
|         |         | 1                 | 16 | 48.77 [1.920] | 50.8 [2.000]  | 18 19       | 147969-5   |
|         |         | 1                 | 17 | 48.77 [1.920] | 50.8 [2.000]  | 18 19       | 147969-4   |
|         |         | 1                 | 10 | 28.45 [1.120] | 30.48 [1.200] | 10 11       | 147969-3   |
|         |         | 1                 | 19 | 51.31 [2.020] | 53.34 [2.100] | 19 20       | 147969-2   |
|         |         | 1                 | 2  | 8.13 [.320]   | 10.16 [.400]  | 2 3         | 147969-1   |

THIS DRAWING IS A CONTROLLED DOCUMENT.

|                  |           |         |
|------------------|-----------|---------|
| DWN              | R.BROWN   | 10SEP01 |
| CHK              | K.WRIGHT  | 10SEP01 |
| APVD             | K.WRIGHT  | 10SEP01 |
| PRODUCT SPEC     | 108-25034 |         |
| APPLICATION SPEC | 114-25026 |         |
| WEIGHT           | -         |         |
| CUSTOMER DRAWING |           |         |

**tyco Electronics** Tyco Electronics Corporation  
Harrisburg, Pa 17105-3608

NAME: HDR ASSY, VERT, SINGLE ROW  
2.54[.100] CL, 0.64[.025] SQ POST,  
WITH PLZN & LATCHING, AMPMODU MTE

|       |     |           |       |            |          |               |    |
|-------|-----|-----------|-------|------------|----------|---------------|----|
| SIZE  | A2  | CAGE CODE | 00779 | DRAWING NO | C=147969 | RESTRICTED TO | -  |
| SCALE | 4:1 | SHEET     | 1     | OF         | 1        | REV           | H1 |