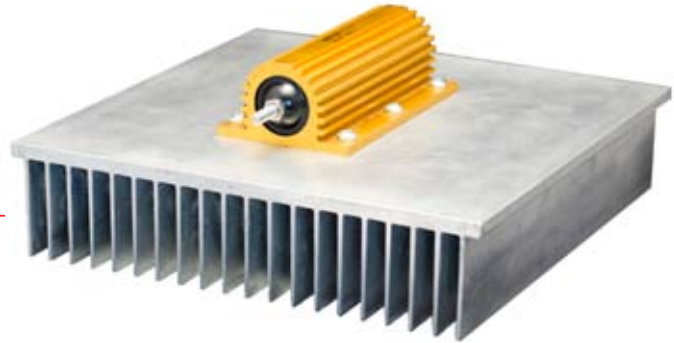


HS Series

Heatsinks for Arcol Resistors



Designed for use with Arcol/Ohmite aluminum housed resistors. Each heatsink is characterized and custom tailored to a specific resistor size, providing a complete thermal solution.



FEATURES

- Many other extrusion profiles available. Contact Ohmite with your requirements
- Multiple finishes available
- Modifications available: screw holes, bolt patterns, milling per customer specifications

SERIES SPECIFICATIONS

Part Number	for Resistor	R θ (°C/W)	Mounting Screw	Product Weight
AH10928V10000JE	HS300	0.34	M5 - 0.80	0.95 lbs
AH10928V07500IE	HS250	0.39	M4 - 0.70	0.95 lbs
AH10928V06000HE	HS200	0.44	M4 - 0.70	1.70 lbs
AH12310V06000GE	HS150	0.93	M3 - 0.50	3.45 lbs
AH50600V05000FE	HS100	1.30	M3 - 0.5	4.20 lbs
AH50600V05000EE	HS75	1.30	M3 - 0.5	5.55 lbs



CHARACTERISTICS

R θ (°C/W) The thermal resistance value assumes vertical orientation of the heatsink in natural convection.

Material Aluminum alloy 6063-T5. The standard stocked parts are unfinished and degreased. Other finishes are available on request.

Mounting



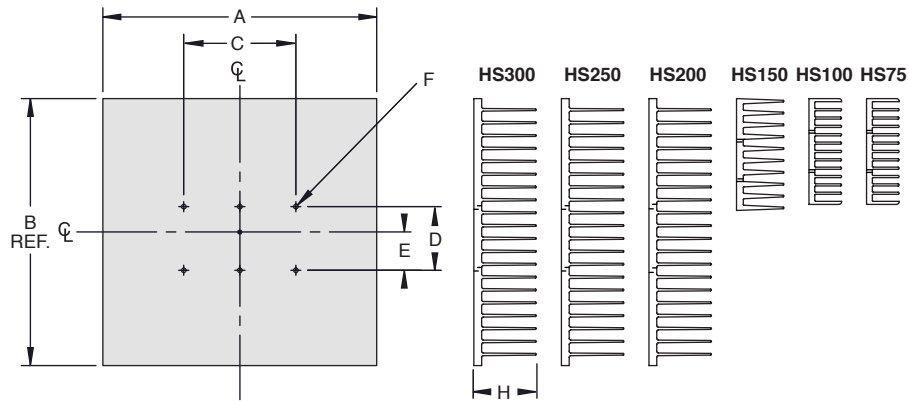
All testing and power characteristics are based on a vertically mounted orientation. Horizontal mounting is acceptable with fins in the upward position with approximately 20% degradation in performance.

(continued)

HS Series

Heatsinks for Arcol Resistors

DIMENSIONS



Part Number	for Resistor	A	B	C	D	E	F	H
AH10928V10000JE	HS300	10.000" ±.020 254mm ±.51	9.750" 247.65mm	4.094" ±.010 104mm ±.25	2.323" ±.010 59mm ±.25	1.396" ±.010 35.46mm ±.25	M5 - 0.80 THRU	2.28" 57.91mm
AH10928V07500IE	HS250	7.500" ±.020 190.50mm ±.51	9.750" 247.65mm	3.504" ±.005 89mm ±.13	2.252" ±.005 57.20mm ±.13	1.361" ±.010 34.57mm ±.25	M4 - 0.70 THRU	2.28" 57.91mm
AH10928V06000HE	HS200	6.000" ±.020 152.40mm ±.51	9.750" 247.65mm	2.756" ±.005 70mm ±.13	2.252" ±.005 57.20mm ±.13	1.361" ±.010 34.57mm ±.25	M4 - 0.70 THRU	2.28" 57.91mm
AH12310V06000GE	HS150	6.000" ±.020 152.40mm ±.51	4.125" 104.78mm	2.283" ±.005 58mm ±.13	1.457" ±.005 37mm ±.13	0.947" ±.010 24.06mm ±.25	M3 - 0.50 THRU	1.75" 44.45mm
AH50600V05000FE	HS100	5.000" ±.020 127mm ±.51	3.924" 99.670mm	1.378" ±.005 35mm ±.13	1.457" ±.005 37mm ±.127	0.728" ±.010 18.500mm ±.254	M3 - 0.5 THRU	1.21" 30.73mm
AH50600V05000EE	HS75	5.000" ±.020 127mm ±.51	3.924" 99.670mm	1.142" ±.005 29mm ±.13	1.457" ±.005 37mm ±.127	0.728" ±.010 18.500mm ±.254	M3 - 0.5 THRU	1.21" 30.73mm

HOW TO ORDER

RoHS Compliant

A H 1 0 9 2 8 V 1 0 0 0 0 J E

Extrusion Style	Finish V = unfinished, degreased	Length (in.) to three decimals 10000 = 10"	Hole Pattern
--------------------	--	--	-----------------